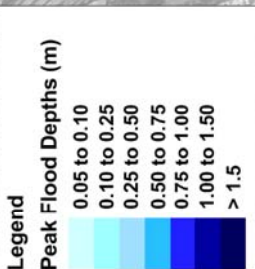
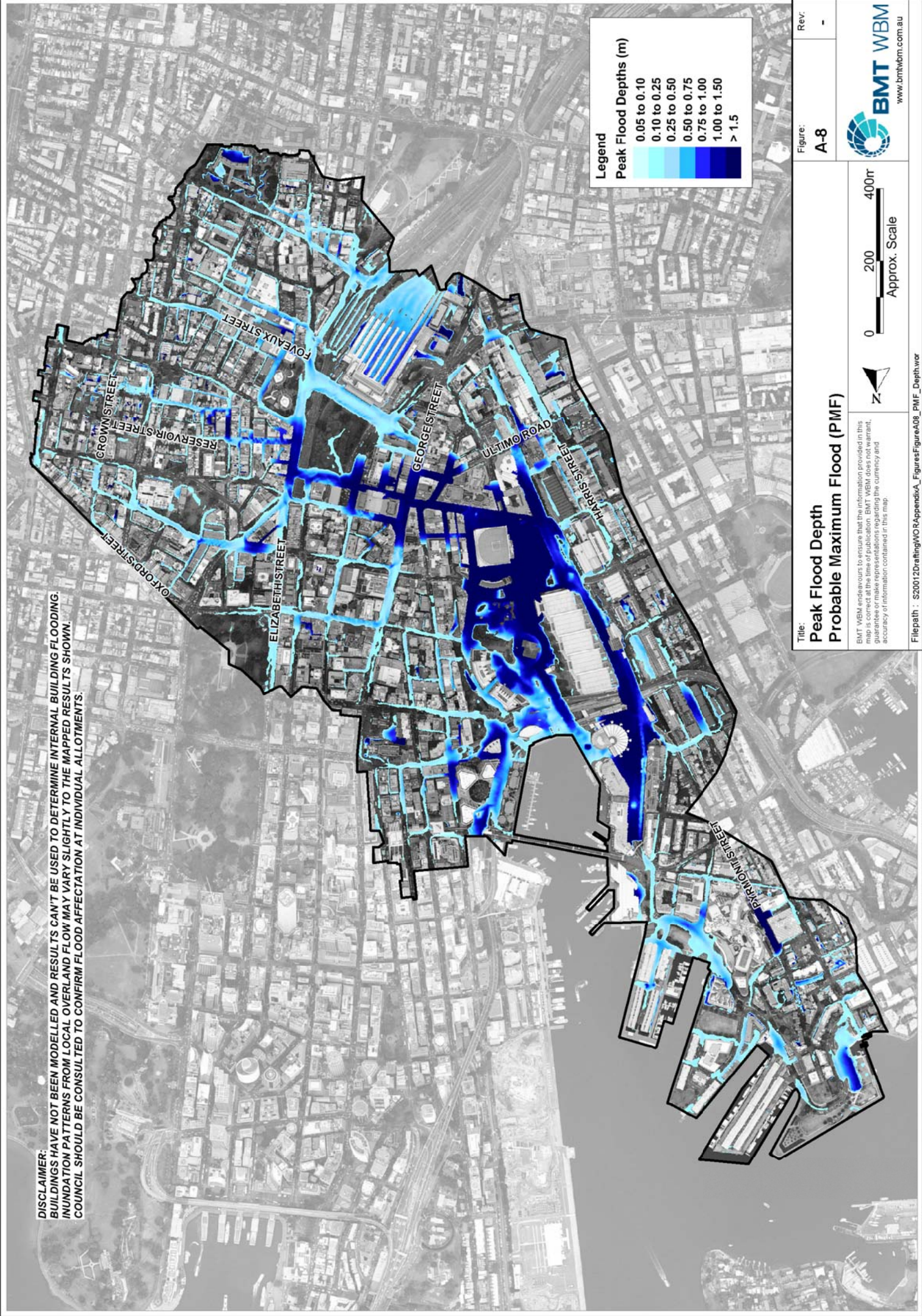


DISCLAIMER:
 BUILDINGS HAVE NOT BEEN MODELLED AND RESULTS CAN'T BE USED TO DETERMINE INTERNAL BUILDING FLOODING.
 INUNDATION PATTERNS FROM LOCAL OVERLAND FLOW MAY VARY SLIGHTLY TO THE MAPPED RESULTS SHOWN.
 COUNCIL SHOULD BE CONSULTED TO CONFIRM FLOOD AFFECTATION AT INDIVIDUAL ALLOTMENTS.



Title: Peak Flood Depth Probable Maximum Flood (PMF)

Figure: A-8

Rev.: -

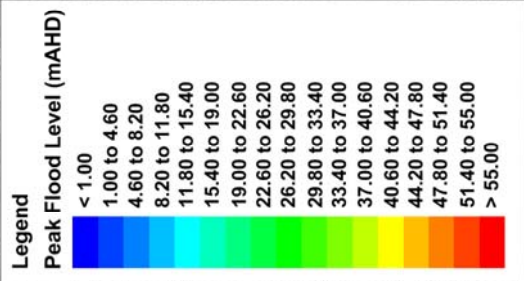
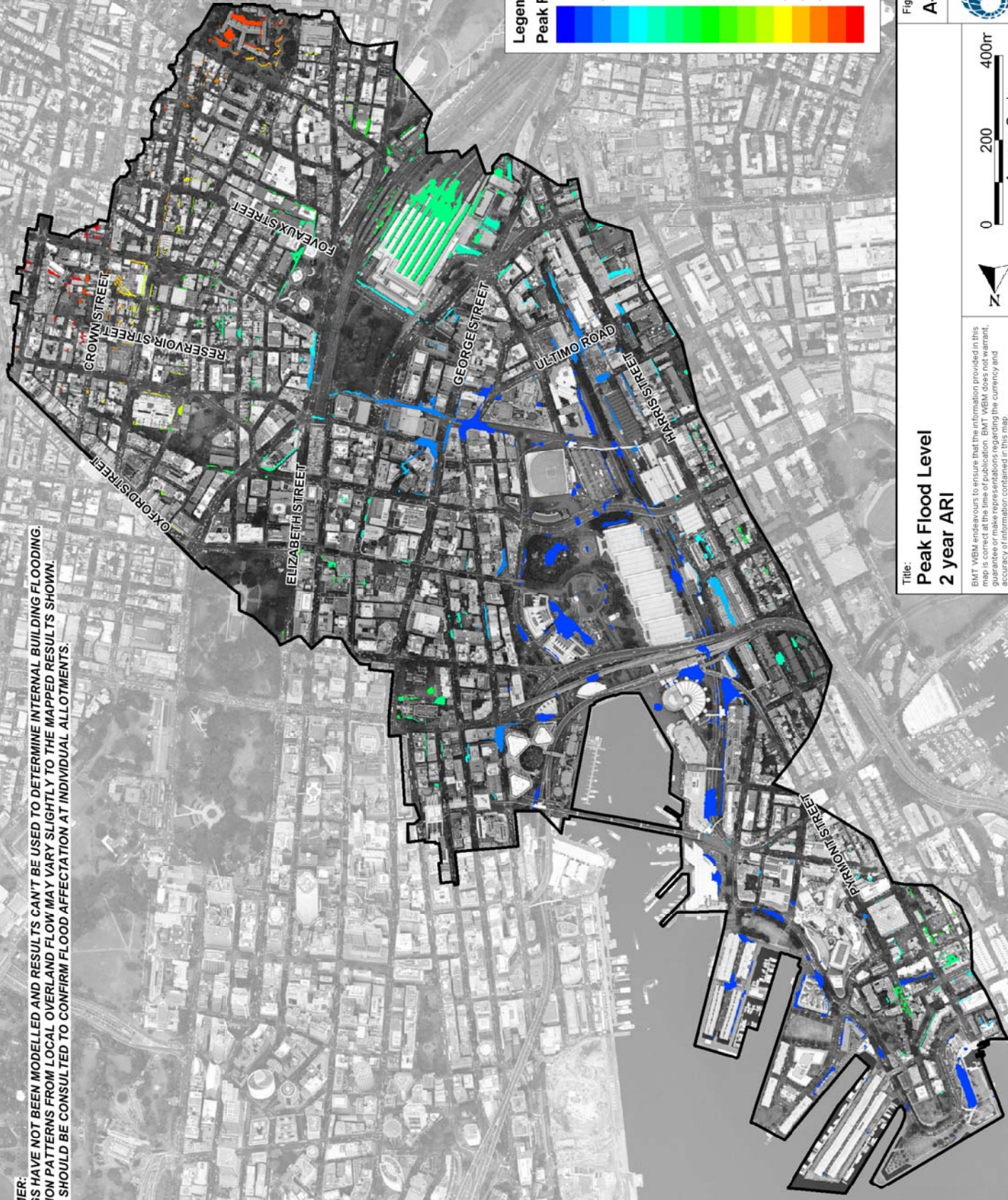
Scale: 0 200 400m
Approx. Scale

Disclaimer: BMT WBM endeavours to ensure that the information provided in this report is accurate and complete. BMT WBM does not warrant, represent, guarantee or make representations regarding the currency and accuracy of information contained in this map.

Filepath: S20012Draing\WCR\AppendixA_FigureFigureA08_PMF_Depth.wor

BMT WBM
www.bmtwbm.com.au

DISCLAIMER:
 BUILDINGS HAVE NOT BEEN MODELLED AND RESULTS CAN'T BE USED TO DETERMINE INTERNAL BUILDING FLOODING.
 INUNDATION PATTERNS FROM LOCAL OVERLAND FLOW MAY VARY SLIGHTLY TO THE MAPPED RESULTS SHOWN.
 COUNCIL SHOULD BE CONSULTED TO CONFIRM FLOOD AFFECTATION AT INDIVIDUAL ALLOTMENTS.



Title: Peak Flood Level
2 year ARI

Figure: A-9

Rev: -

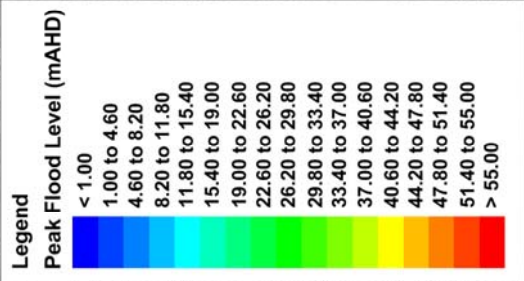
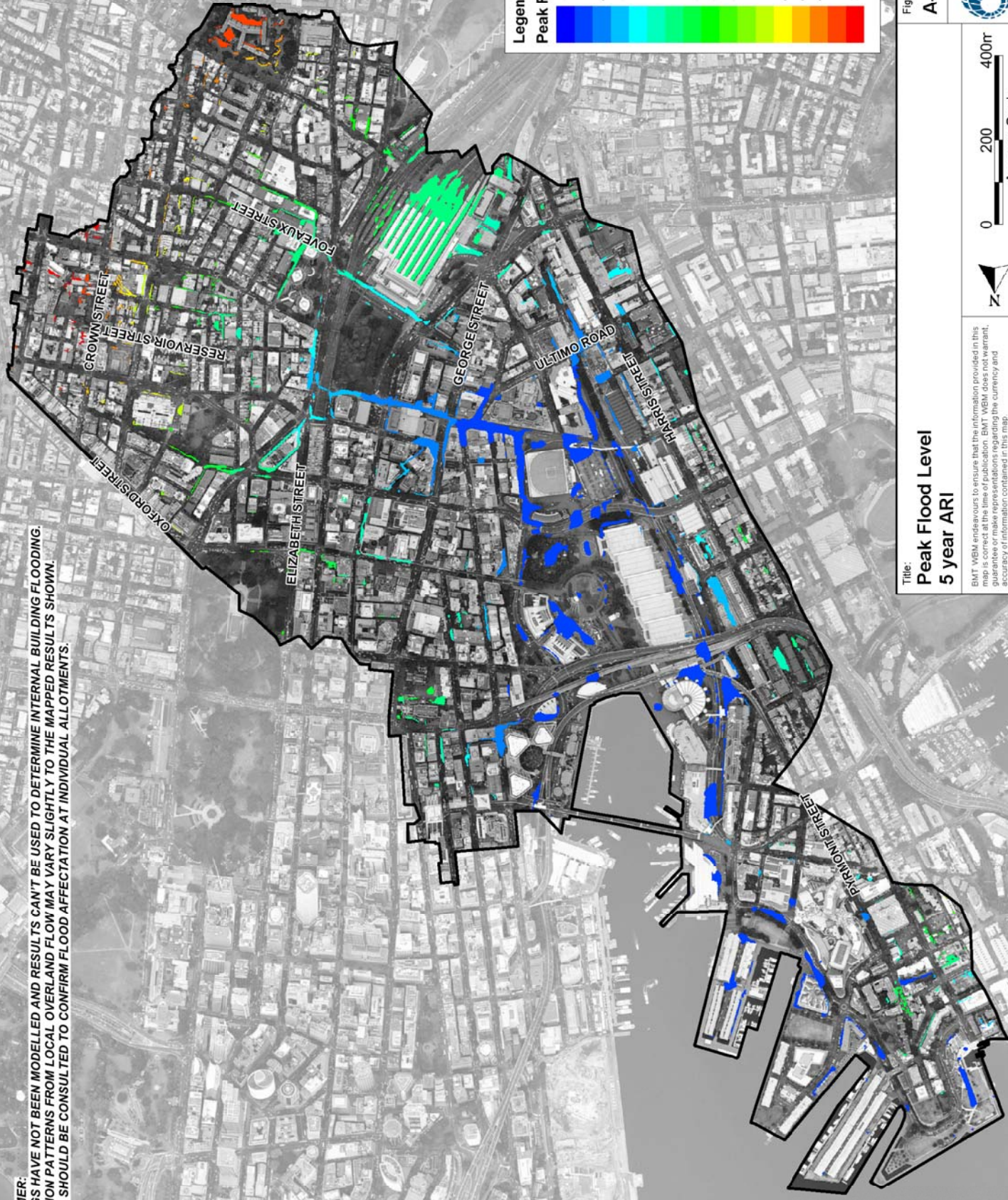
Scale: 0 200 400m
Approx. Scale

Disclaimer: BMT WBM endeavours to ensure that the information provided in this map is accurate and reliable. BMT WBM does not warrant, guarantee or make representations regarding the currency and accuracy of information contained in this map.

Filepath: S20012Drainage\ORA-AppendixA_FigureFigureA09_002Y_R_Level.twr

BMT WBM
www.bmtwbm.com.au

DISCLAIMER:
 BUILDINGS HAVE NOT BEEN MODELLED AND RESULTS CAN'T BE USED TO DETERMINE INTERNAL BUILDING FLOODING.
 INUNDATION PATTERNS FROM LOCAL OVERLAND FLOW MAY VARY SLIGHTLY TO THE MAPPED RESULTS SHOWN.
 COUNCIL SHOULD BE CONSULTED TO CONFIRM FLOOD AFFECTATION AT INDIVIDUAL ALLOTMENTS.



Title: Peak Flood Level
5 year ARI

Figure: A-10

Rev.: -

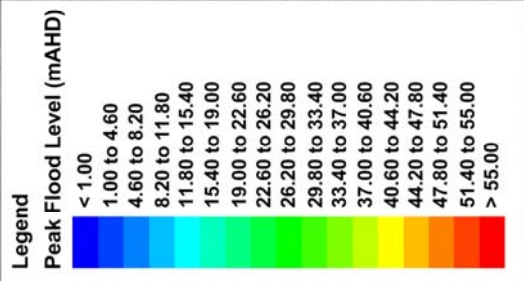
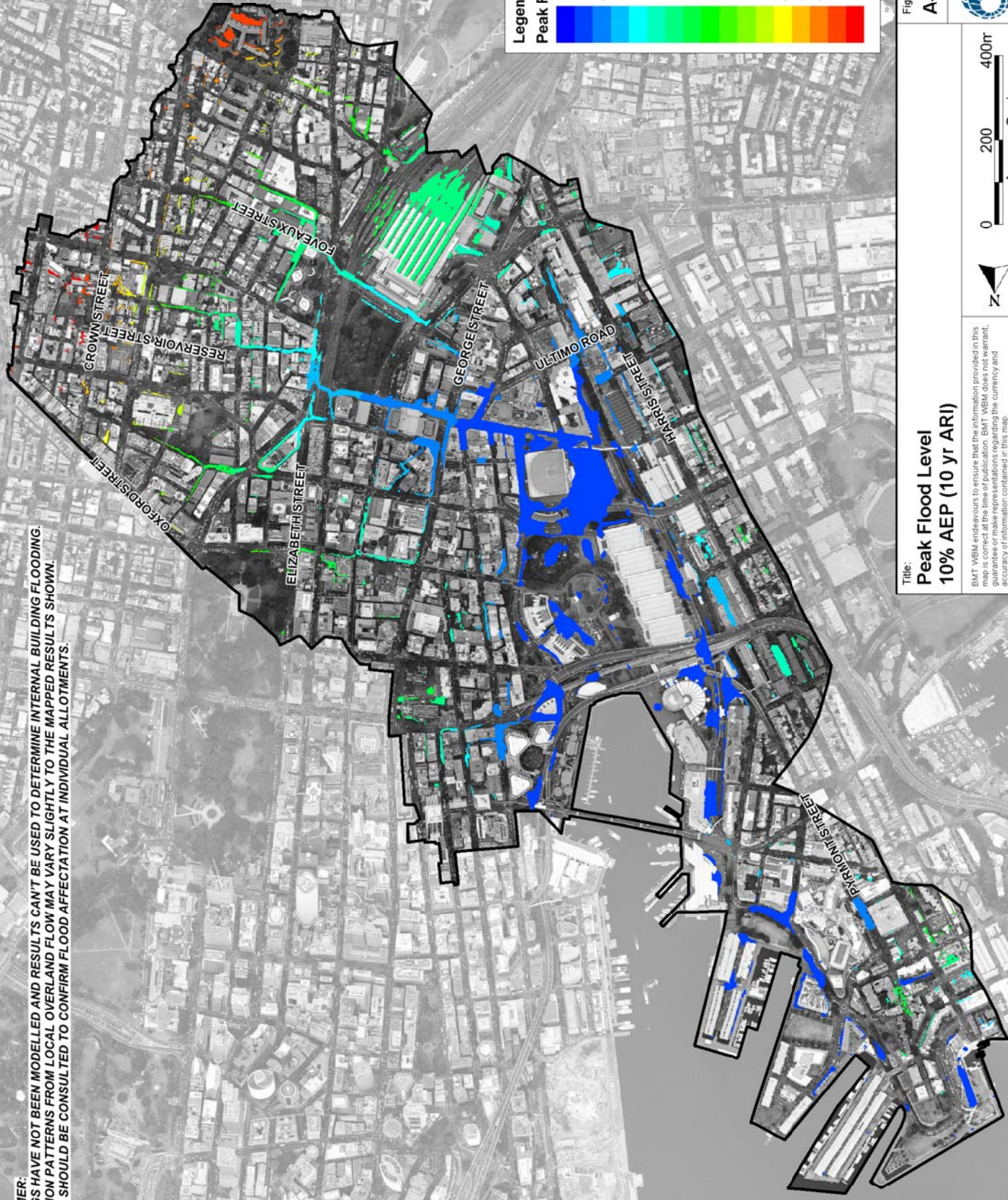
Scale: 0 200 400m
Approx. Scale

Disclaimer: BMT WBM endeavours to ensure that the information provided in this map is accurate. BMT WBM does not warrant, represent, guarantee or make representations regarding the currency and accuracy of information contained in this map.

Filepath: S20012DrainageWORAppendixA_FigureFigureA10_005YR_Level.twr

BMT WBM
www.bmtwbm.com.au

DISCLAIMER:
 BUILDINGS HAVE NOT BEEN MODELLED AND RESULTS CAN'T BE USED TO DETERMINE INTERNAL BUILDING FLOODING.
 INUNDATION PATTERNS FROM LOCAL OVERLAND FLOW MAY VARY SLIGHTLY TO THE MAPPED RESULTS SHOWN.
 COUNCIL SHOULD BE CONSULTED TO CONFIRM FLOOD AFFECTATION AT INDIVIDUAL ALLOTMENTS.



Title:
Peak Flood Level
10% AEP (10 yr ARI)

Figure:
A-11

Rev:
 -

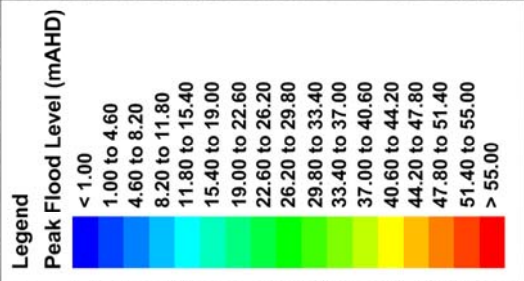
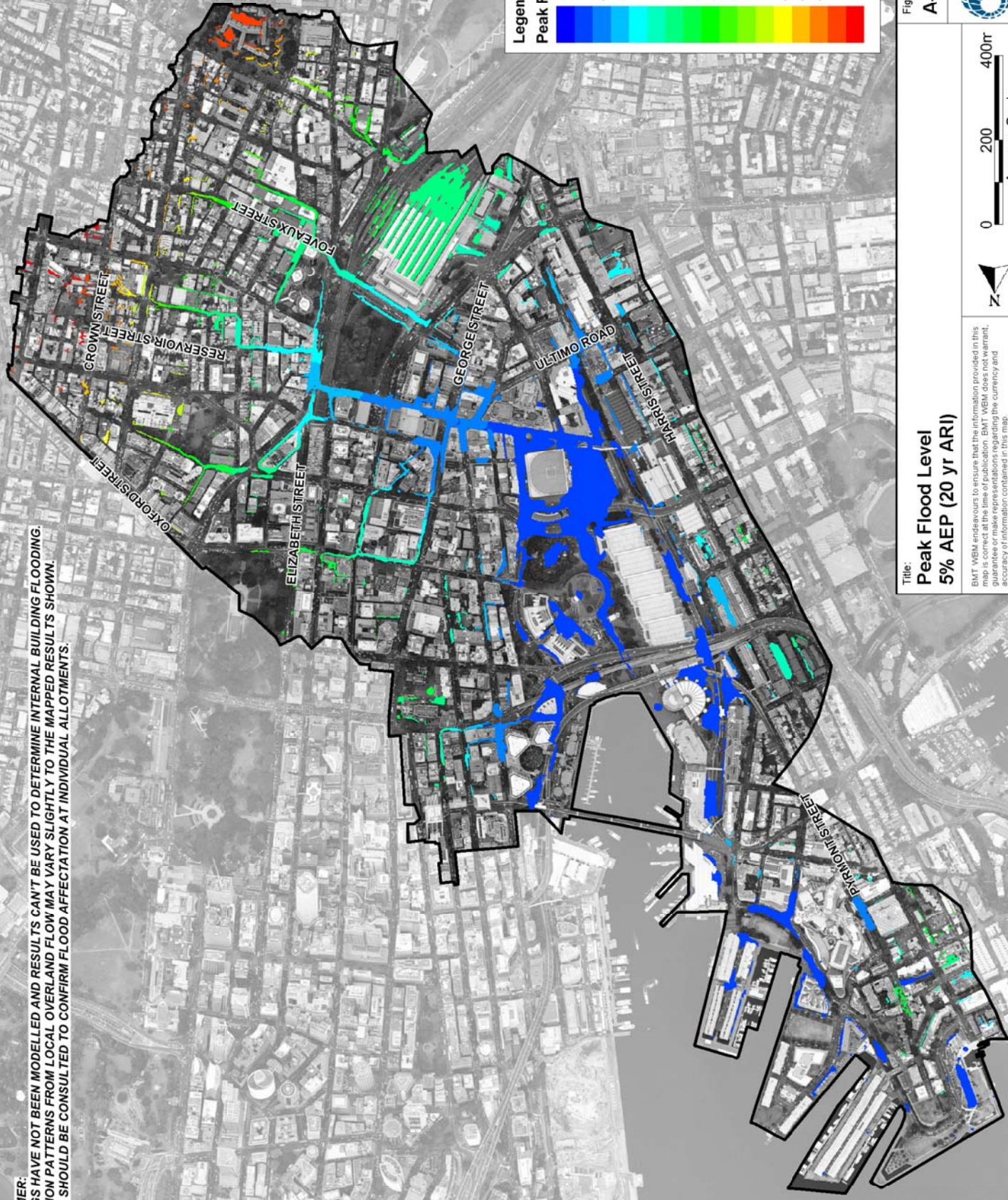
Scale:
 0 200 400m
 Approx. Scale

Disclaimer:
 BMT WBM endeavours to ensure that the information provided in this report is accurate and complete. BMT WBM does not warrant, represent, guarantee or make representations regarding the currency and accuracy of information contained in this map.

Filepath: S20012Drainage\ORA-AppendixA_FigureFigureA11_010YR_Level.twr

BMT WBM
 www.bmtwbm.com.au

DISCLAIMER:
 BUILDINGS HAVE NOT BEEN MODELLED AND RESULTS CAN'T BE USED TO DETERMINE INTERNAL BUILDING FLOODING.
 INUNDATION PATTERNS FROM LOCAL OVERLAND FLOW MAY VARY SLIGHTLY TO THE MAPPED RESULTS SHOWN.
 COUNCIL SHOULD BE CONSULTED TO CONFIRM FLOOD AFFECTATION AT INDIVIDUAL ALLOTMENTS.



Title:
Peak Flood Level
5% AEP (20 yr ARI)

Figure:
A-12

Rev.:
 -

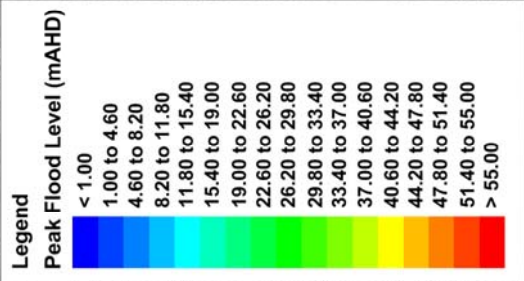
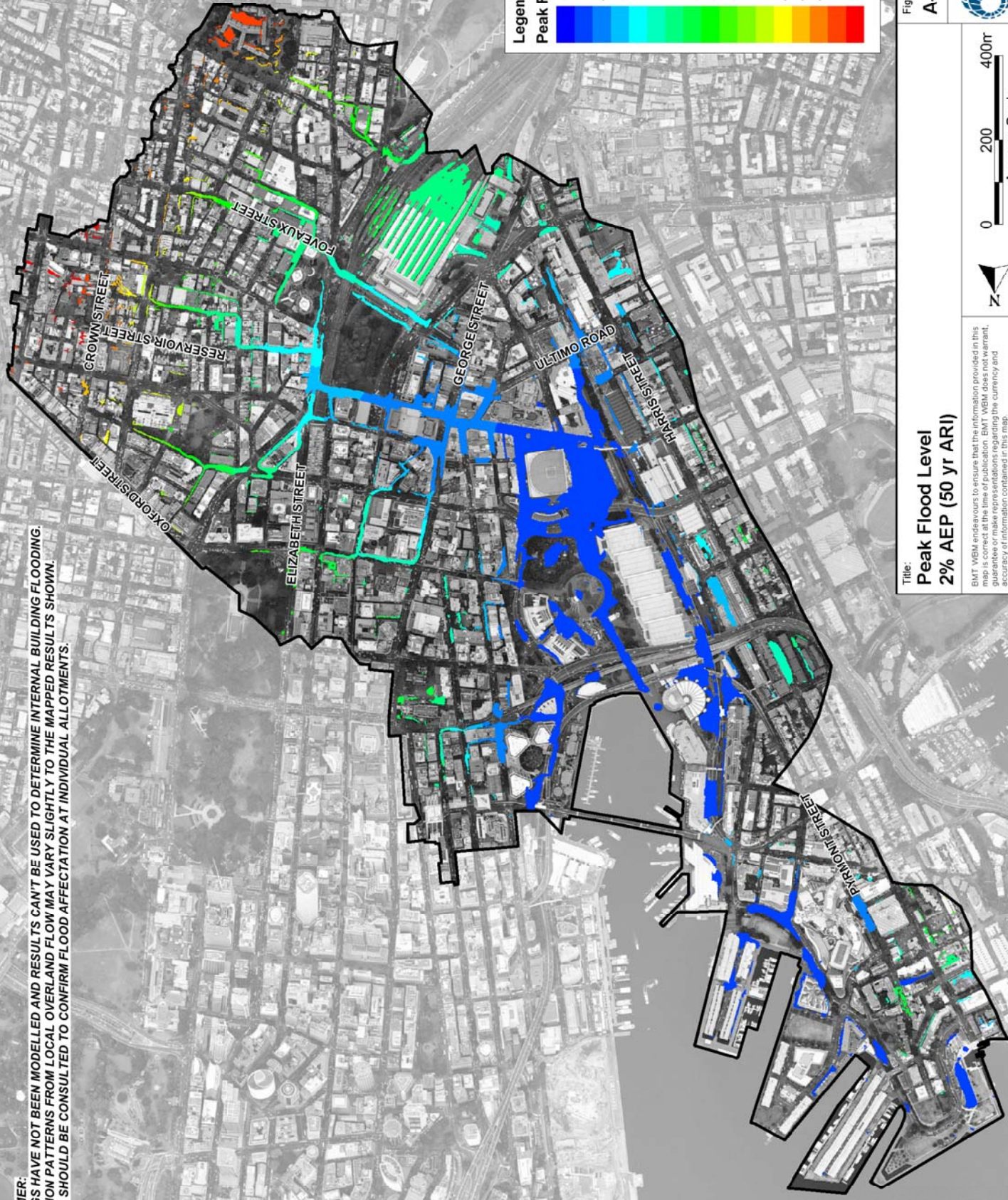
Scale:
 0 200 400m
 Approx. Scale

Disclaimer:
 BMT WBM endeavours to ensure that the information provided in this map is accurate and reliable. BMT WBM does not warrant, guarantee or make representations regarding the currency and accuracy of information contained in this map.

Filepath: S20012DrainageWORAppendixA_FigureFigureA12_020YR_Level.twr

BMT WBM
 www.bmtwbm.com.au

DISCLAIMER:
 BUILDINGS HAVE NOT BEEN MODELLED AND RESULTS CAN'T BE USED TO DETERMINE INTERNAL BUILDING FLOODING.
 INUNDATION PATTERNS FROM LOCAL OVERLAND FLOW MAY VARY SLIGHTLY TO THE MAPPED RESULTS SHOWN.
 COUNCIL SHOULD BE CONSULTED TO CONFIRM FLOOD AFFECTATION AT INDIVIDUAL ALLOTMENTS.



Title:
Peak Flood Level
2% AEP (50 yr ARI)

Figure:
A-13

Rev.:
 -

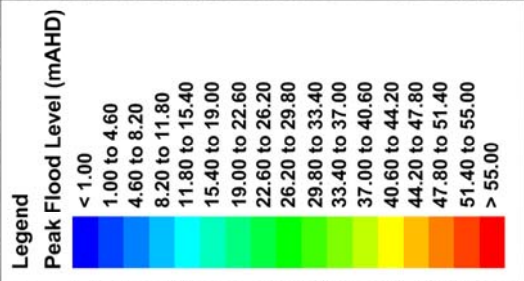
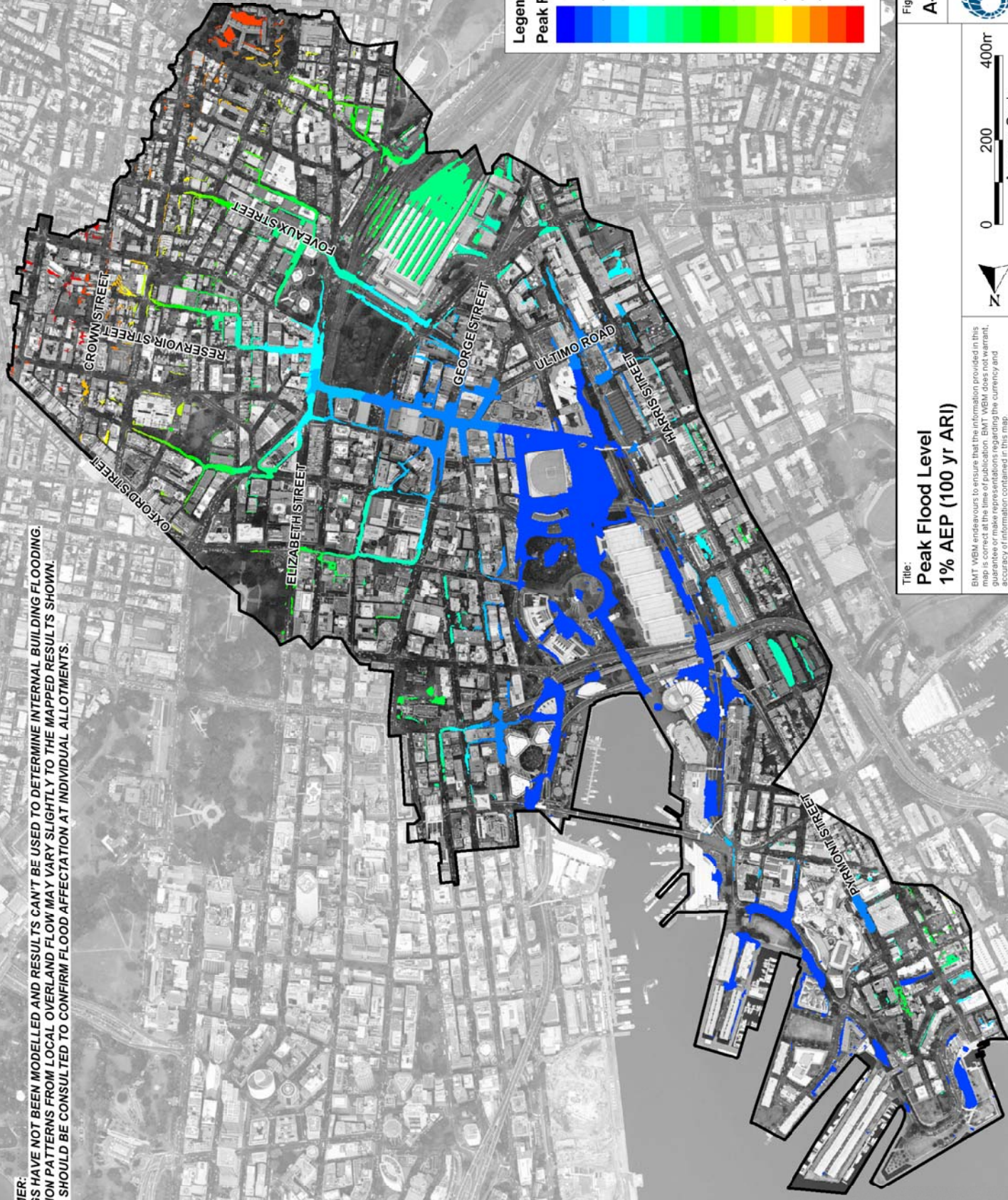
Scale:
 0 200 400m
 Approx. Scale

Disclaimer:
 BMT WBM endeavours to ensure that the information provided in this map is accurate and reliable. BMT WBM does not warrant, guarantee or make representations regarding the currency and accuracy of information contained in this map.

Filepath: S20012DrainageWORAppendixA_FigureFigureA13_050YR_Level.twr

BMT WBM
 www.bmtwbm.com.au

DISCLAIMER:
 BUILDINGS HAVE NOT BEEN MODELLED AND RESULTS CAN'T BE USED TO DETERMINE INTERNAL BUILDING FLOODING.
 INUNDATION PATTERNS FROM LOCAL OVERLAND FLOW MAY VARY SLIGHTLY TO THE MAPPED RESULTS SHOWN.
 COUNCIL SHOULD BE CONSULTED TO CONFIRM FLOOD AFFECTATION AT INDIVIDUAL ALLOTMENTS.



Title:
Peak Flood Level
1% AEP (100 yr ARI)

Figure:
A-14

Rev:
 -

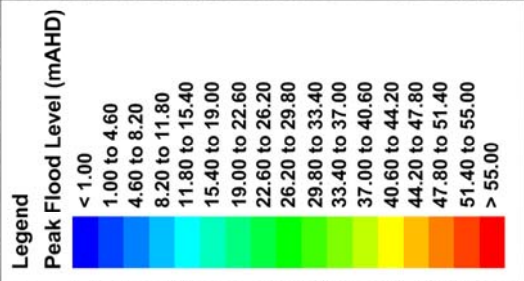
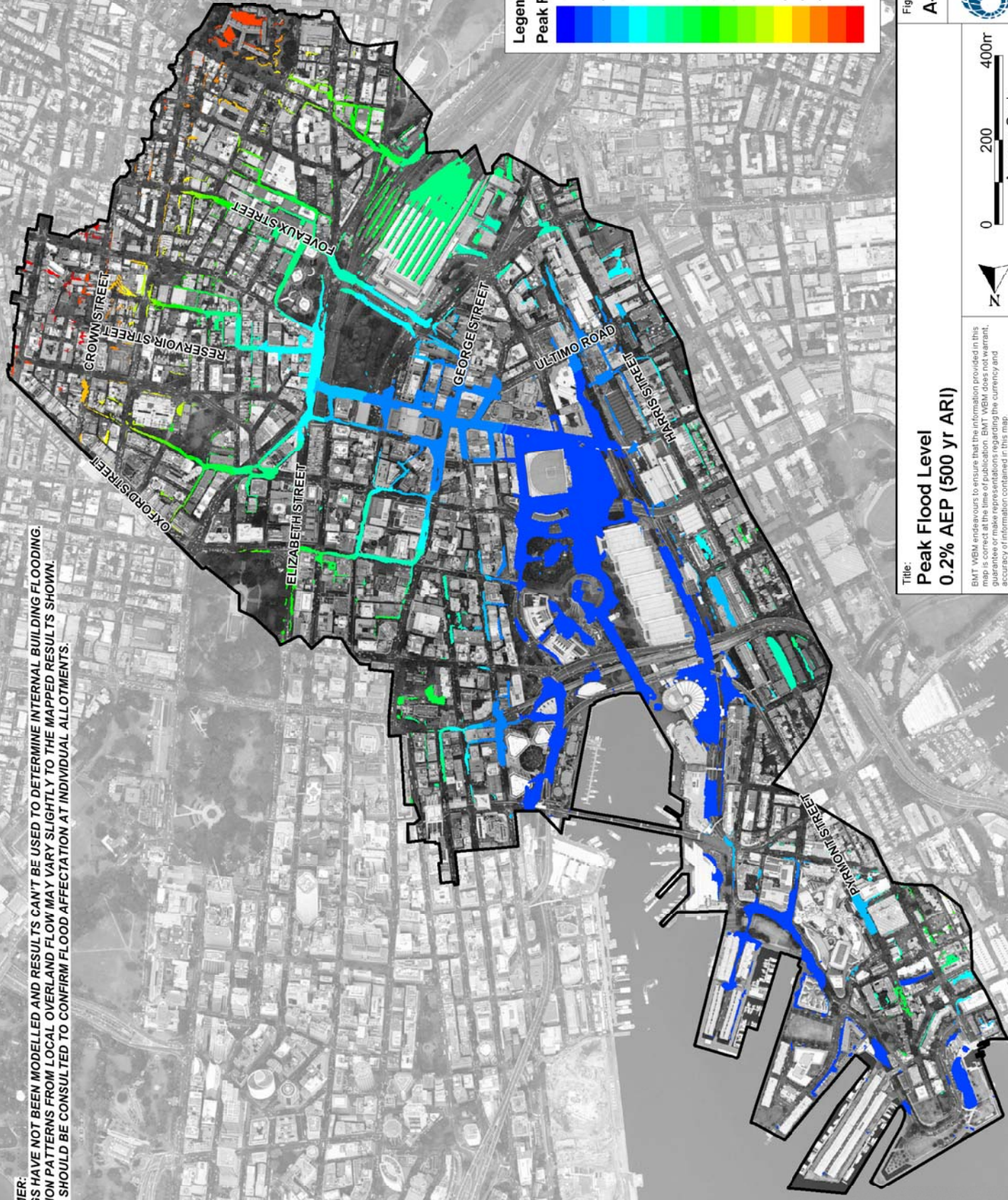
Scale:
 0 200 400m
 Approx. Scale

Disclaimer:
 BMT WBM endeavours to ensure that the information provided in this document is accurate and complete. BMT WBM does not warrant, guarantee or make representations regarding the currency and accuracy of information contained in this map.

Filepath: S20012Drainage\ORA-AppendixA_FigureFigureA14_100YR_Level.twr

BMT WBM
 www.bmtwbm.com.au

DISCLAIMER:
 BUILDINGS HAVE NOT BEEN MODELLED AND RESULTS CAN'T BE USED TO DETERMINE INTERNAL BUILDING FLOODING.
 INUNDATION PATTERNS FROM LOCAL OVERLAND FLOW MAY VARY SLIGHTLY TO THE MAPPED RESULTS SHOWN.
 COUNCIL SHOULD BE CONSULTED TO CONFIRM FLOOD AFFECTATION AT INDIVIDUAL ALLOTMENTS.



Title:
Peak Flood Level
0.2% AEP (500 yr AR1)

Figure:
A-15

Rev:
 -

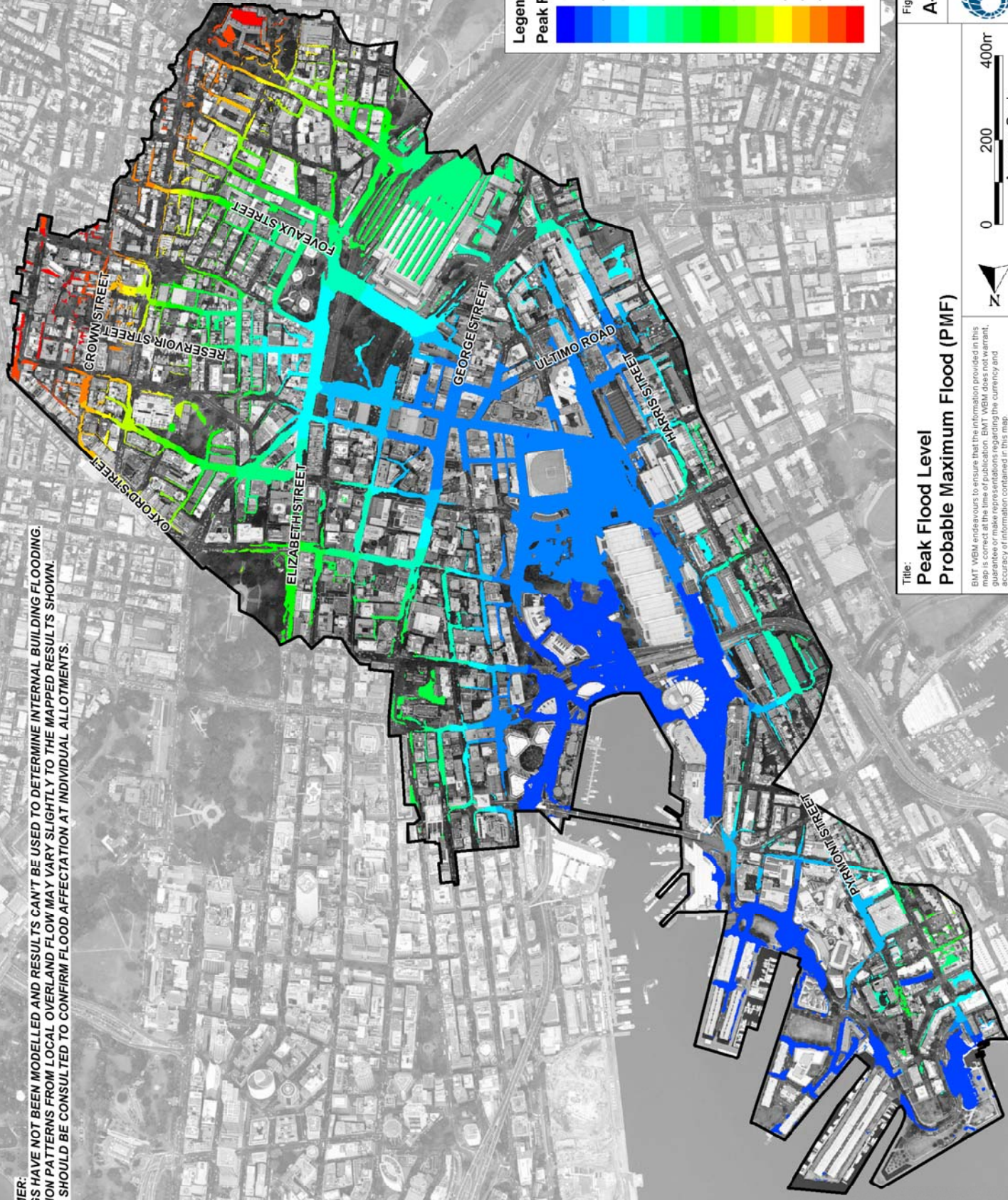
Scale:
 0 200 400m
 Approx. Scale

Disclaimer:
 BMT WBM endeavours to ensure that the information provided in this map is accurate and reliable. BMT WBM does not warrant, guarantee or make representations regarding the currency and accuracy of information contained in this map.

Filepath: S20012Drainage\ORA-AppendixA_FigureFigureA15_500Yr_Level.twr

BMT WBM
 www.bmtwbm.com.au

DISCLAIMER:
 BUILDINGS HAVE NOT BEEN MODELLED AND RESULTS CAN'T BE USED TO DETERMINE INTERNAL BUILDING FLOODING.
 INUNDATION PATTERNS FROM LOCAL OVERLAND FLOW MAY VARY SLIGHTLY TO THE MAPPED RESULTS SHOWN.
 COUNCIL SHOULD BE CONSULTED TO CONFIRM FLOOD AFFECTATION AT INDIVIDUAL ALLOTMENTS.



Legend

Peak Flood Level (mAHD)

< 1.00
1.00 to 4.60
4.60 to 8.20
8.20 to 11.80
11.80 to 15.40
15.40 to 19.00
19.00 to 22.60
22.60 to 26.20
26.20 to 29.80
29.80 to 33.40
33.40 to 37.00
37.00 to 40.60
40.60 to 44.20
44.20 to 47.80
47.80 to 51.40
> 55.00

Title: Peak Flood Level Probable Maximum Flood (PMF)

Figure: A-16

Rev: -

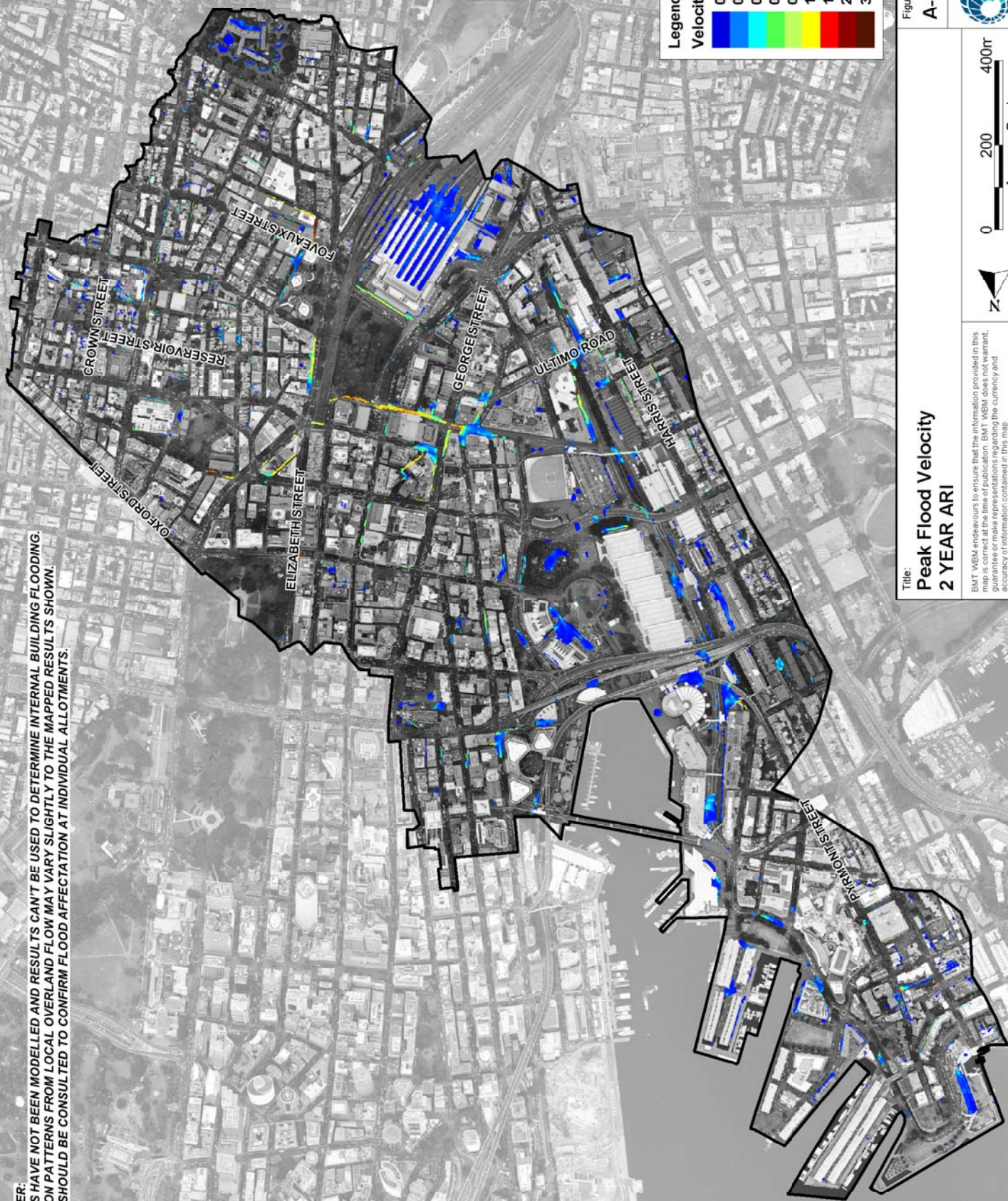
Scale: 0 200 400m Approx. Scale

Disclaimer: BMT WBM endeavours to ensure that the information provided in this map is accurate and reliable. BMT WBM does not warrant, guarantee or make representations regarding the currency and accuracy of information contained in this map.

Filepath: S20012DraingWORAppendixA_FigureFigureA16_PMF_Level.wor

BMT WBM
www.bmtwbm.com.au

DISCLAIMER:
 BUILDINGS HAVE NOT BEEN MODELLED AND RESULTS CAN'T BE USED TO DETERMINE INTERNAL BUILDING FLOODING.
 INUNDATION PATTERNS FROM LOCAL OVERLAND FLOW MAY VARY SLIGHTLY TO THE MAPPED RESULTS SHOWN.
 COUNCIL SHOULD BE CONSULTED TO CONFIRM FLOOD AFFECTATION AT INDIVIDUAL ALLOTMENTS.



Title: **Peak Flood Velocity**
2 YEAR ARI

Figure: **A-17**

Rev: **-**

BMT WBM endeavours to ensure that the information provided in this report is accurate and complete to the best of our knowledge, but we do not guarantee or make representations regarding the currency and accuracy of information contained in this map.

DISCLAIMER:
 BUILDINGS HAVE NOT BEEN MODELLED AND RESULTS CAN'T BE USED TO DETERMINE INTERNAL BUILDING FLOODING.
 INUNDATION PATTERNS FROM LOCAL OVERLAND FLOW MAY VARY SLIGHTLY TO THE MAPPED RESULTS SHOWN.
 COUNCIL SHOULD BE CONSULTED TO CONFIRM FLOOD AFFECTATION AT INDIVIDUAL ALLOTMENTS.

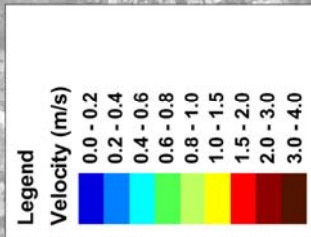
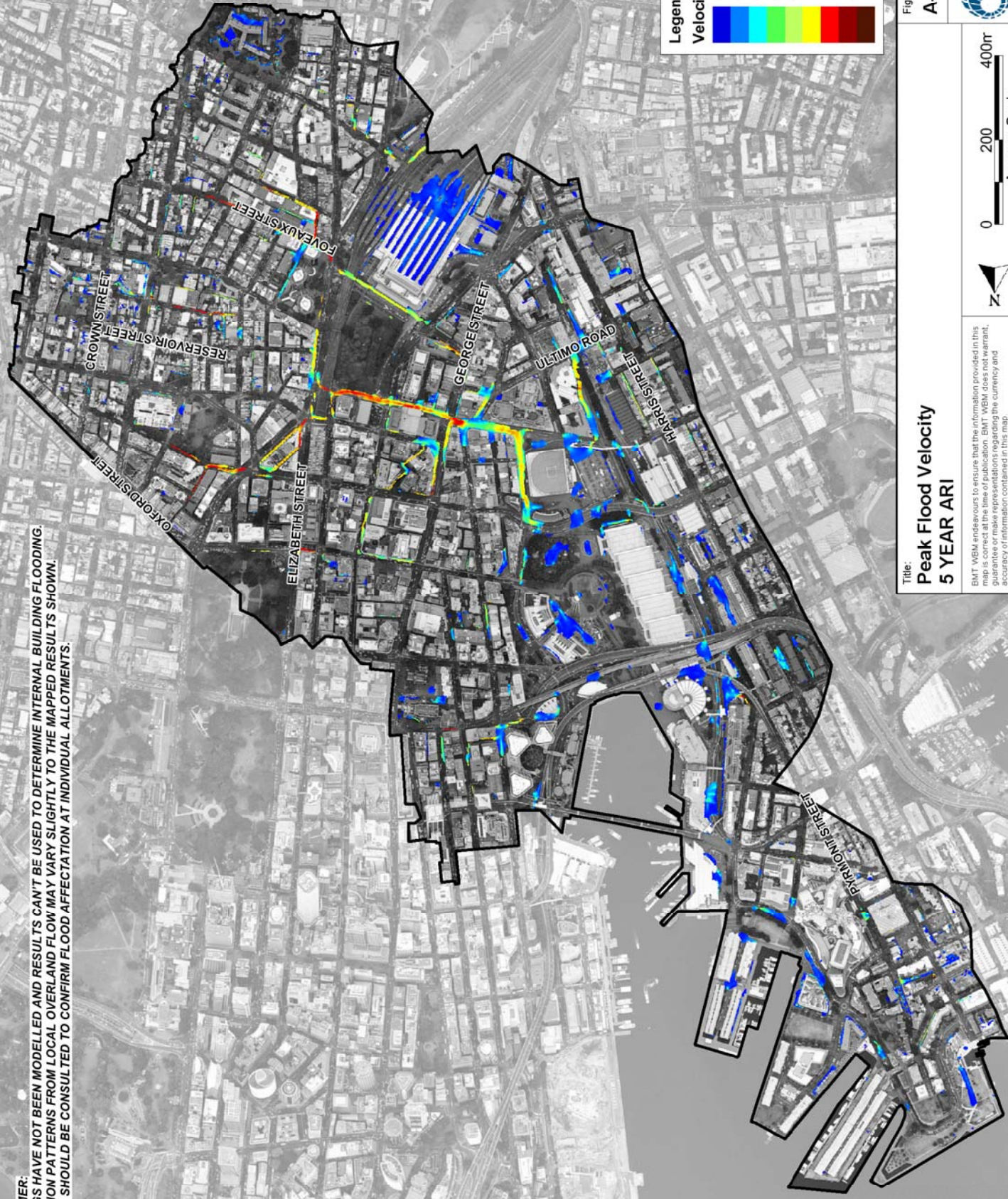


Figure: **A-18**

Rev: -

**Peak Flood Velocity
5 YEAR ARI**

BMT WBM endeavours to ensure that the information provided in this report is accurate and reliable. However, BMT WBM does not warrant, guarantee or make representations regarding the currency and accuracy of information contained in this map.

Scale: 0 200 400m
Approx. Scale

Filepath : S20012Drainage\WCR\AppendixA_FigureFigureA18_005YR_Velocity.wor

BMT WBM
www.bmtwbm.com.au

DISCLAIMER:
 BUILDINGS HAVE NOT BEEN MODELLED AND RESULTS CAN'T BE USED TO DETERMINE INTERNAL BUILDING FLOODING.
 INUNDATION PATTERNS FROM LOCAL OVERLAND FLOW MAY VARY SLIGHTLY TO THE MAPPED RESULTS SHOWN.
 COUNCIL SHOULD BE CONSULTED TO CONFIRM FLOOD AFFECTATION AT INDIVIDUAL ALLOTMENTS.

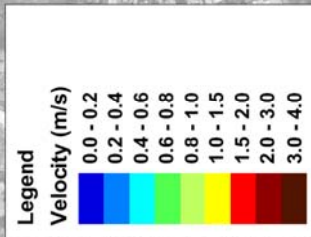
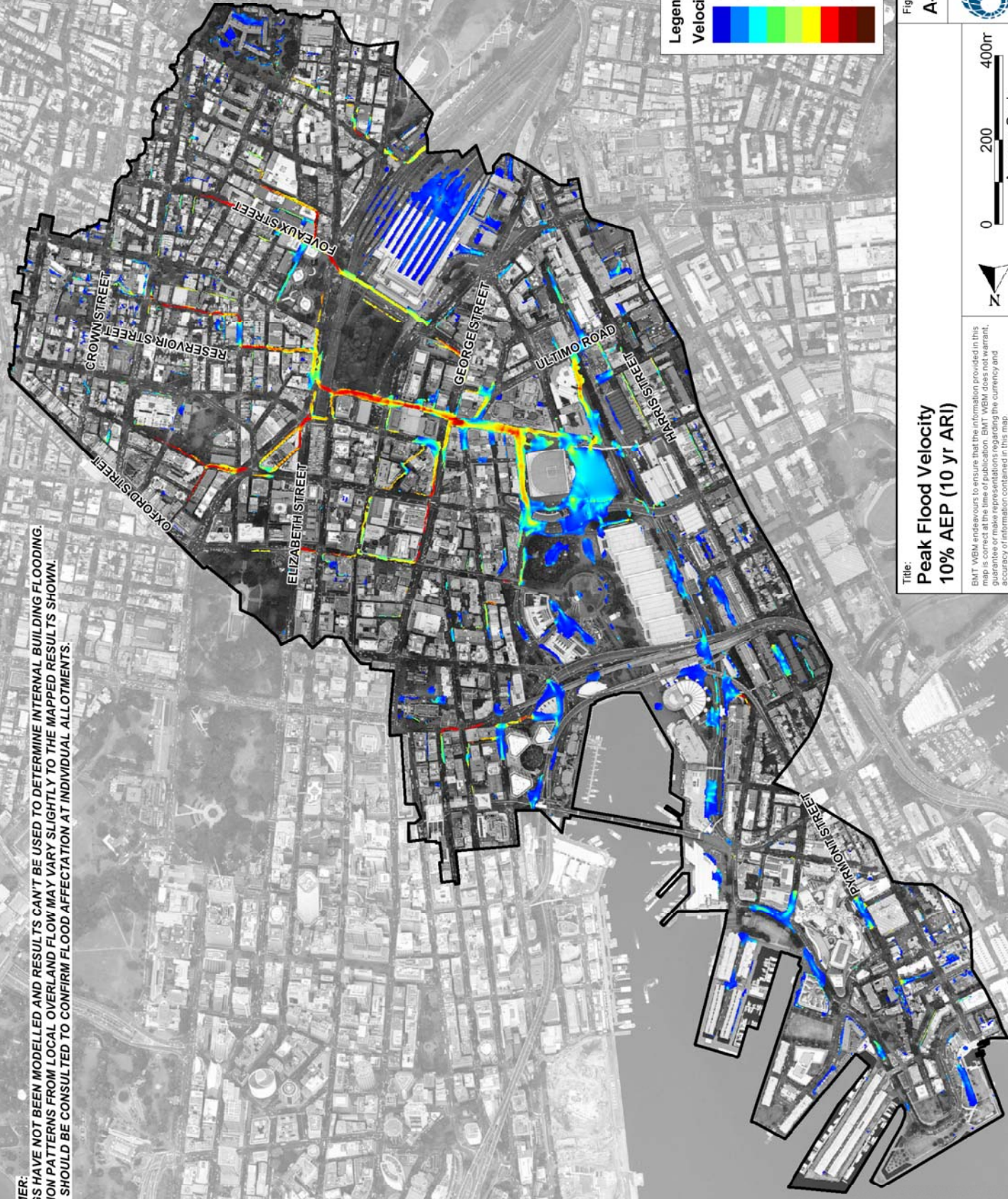


Figure: **A-19**

Rev: -

**Peak Flood Velocity
 10% AEP (10 yr ARI)**

BMT WBM endeavours to ensure that the information provided in this report is accurate and reliable. However, BMT WBM does not warrant, guarantee or make representations regarding the currency and accuracy of information contained in this map.

Scale: 0 200 400m
 Approx. Scale

Filepath : S20012Draing\WOR\AppendixA_FigureFigureA19_010YR_Velocity.wor

BMT WBM
 www.bmtwbm.com.au

DISCLAIMER:
 BUILDINGS HAVE NOT BEEN MODELLED AND RESULTS CAN'T BE USED TO DETERMINE INTERNAL BUILDING FLOODING.
 INUNDATION PATTERNS FROM LOCAL OVERLAND FLOW MAY VARY SLIGHTLY TO THE MAPPED RESULTS SHOWN.
 COUNCIL SHOULD BE CONSULTED TO CONFIRM FLOOD AFFECTATION AT INDIVIDUAL ALLOTMENTS.

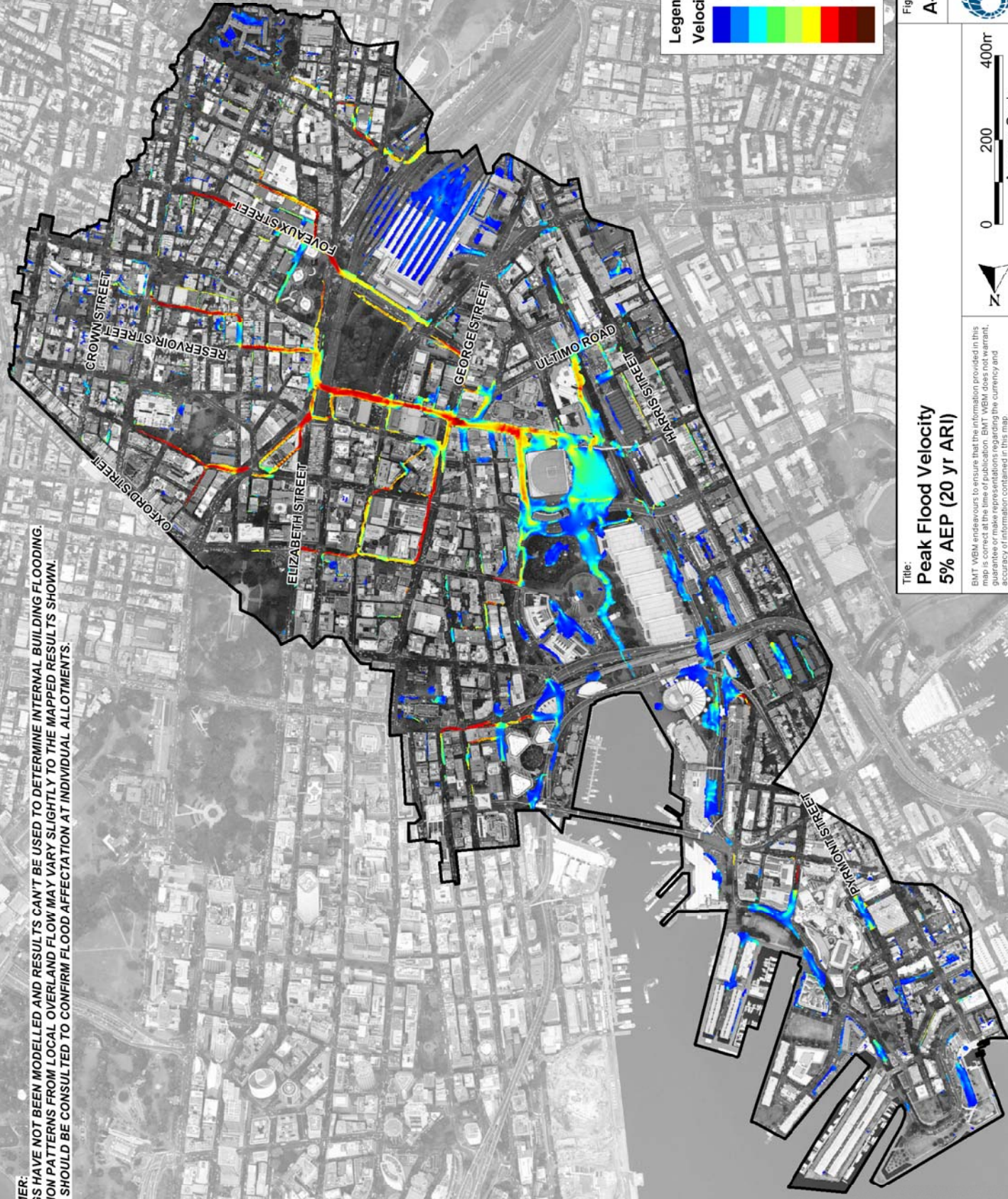


Figure: A-20

Rev: -

BMT WBM
 www.bmtwbm.com.au

**Peak Flood Velocity
 5% AEP (20 yr ARI)**

BMT WBM endeavours to ensure that the information provided in this report is accurate and complete. However, BMT WBM does not warrant, guarantee or make representations regarding the currency and accuracy of information contained in this map.

Filepath : S20012Drainage\ORA-AppendixA_FigureFigureA20_020YR_Velocity.wor

DISCLAIMER:
 BUILDINGS HAVE NOT BEEN MODELLED AND RESULTS CAN'T BE USED TO DETERMINE INTERNAL BUILDING FLOODING.
 INUNDATION PATTERNS FROM LOCAL OVERLAND FLOW MAY VARY SLIGHTLY TO THE MAPPED RESULTS SHOWN.
 COUNCIL SHOULD BE CONSULTED TO CONFIRM FLOOD AFFECTATION AT INDIVIDUAL ALLOTMENTS.

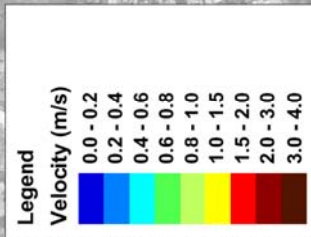
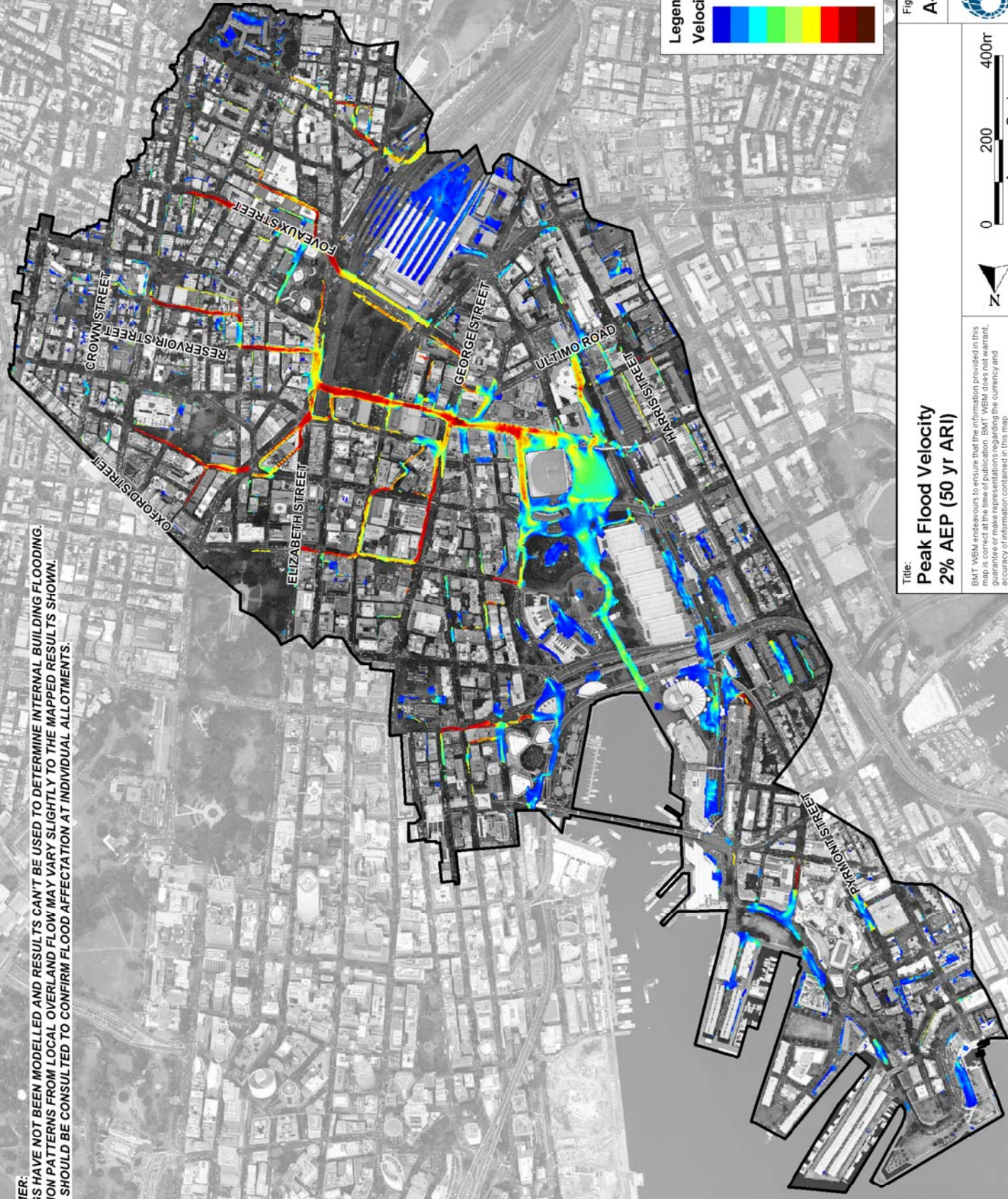


Figure: A-21

Rev: -

**Peak Flood Velocity
2% AEP (50 yr ARI)**

BMT WBM endeavours to ensure that the information provided in this report is accurate and complete to the best of our knowledge, but we do not guarantee or make representations regarding the currency and accuracy of information contained in this map.

Scale: 0 200 400m
Approx. Scale

Filepath : S20012Drainage\ORA-AppendixA_FigureFigureA2_050YR_Velocity.wor

BMT WBM
www.bmtwbm.com.au

DISCLAIMER:
 BUILDINGS HAVE NOT BEEN MODELLED AND RESULTS CAN'T BE USED TO DETERMINE INTERNAL BUILDING FLOODING.
 INUNDATION PATTERNS FROM LOCAL OVERLAND FLOW MAY VARY SLIGHTLY TO THE MAPPED RESULTS SHOWN.
 COUNCIL SHOULD BE CONSULTED TO CONFIRM FLOOD AFFECTATION AT INDIVIDUAL ALLOTMENTS.

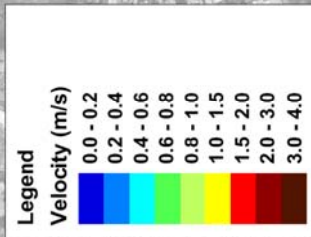
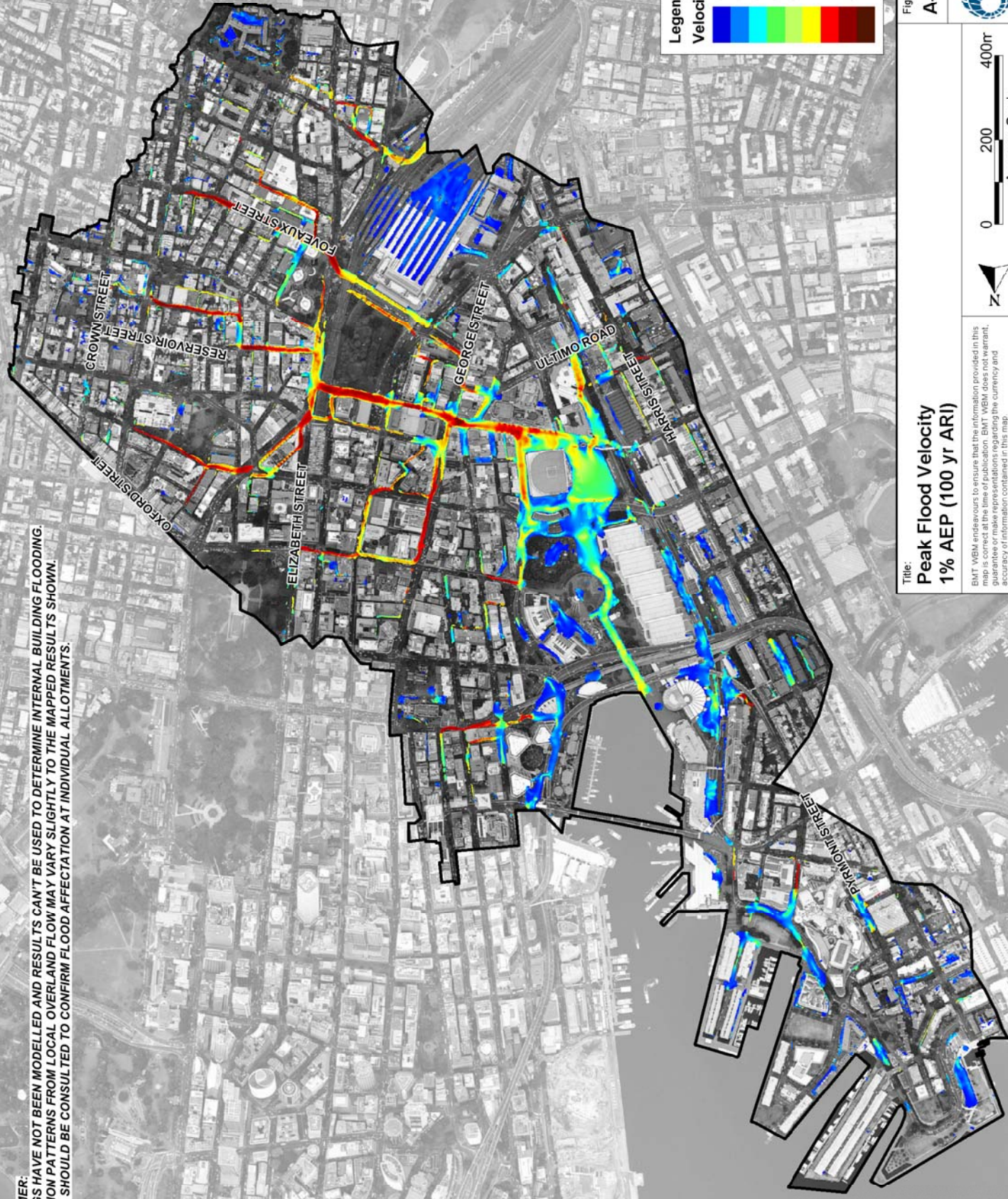


Figure: A-22

Rev: -

**Peak Flood Velocity
1% AEP (100 yr ARI)**

BMT WBM endeavours to ensure that the information provided in this report is accurate and complete. However, BMT WBM does not guarantee or make representations regarding the currency and accuracy of information contained in this map.

Scale: 0 200 400m
Approx. Scale

Filepath : S20012Drainage\WCR\AppendixA_FigureFigureA22_100YR_Velocity.wsr

BMT WBM
www.bmtwbm.com.au

DISCLAIMER:
 BUILDINGS HAVE NOT BEEN MODELLED AND RESULTS CAN'T BE USED TO DETERMINE INTERNAL BUILDING FLOODING.
 INUNDATION PATTERNS FROM LOCAL OVERLAND FLOW MAY VARY SLIGHTLY TO THE MAPPED RESULTS SHOWN.
 COUNCIL SHOULD BE CONSULTED TO CONFIRM FLOOD AFFECTATION AT INDIVIDUAL ALLOTMENTS.

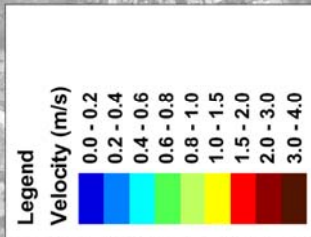
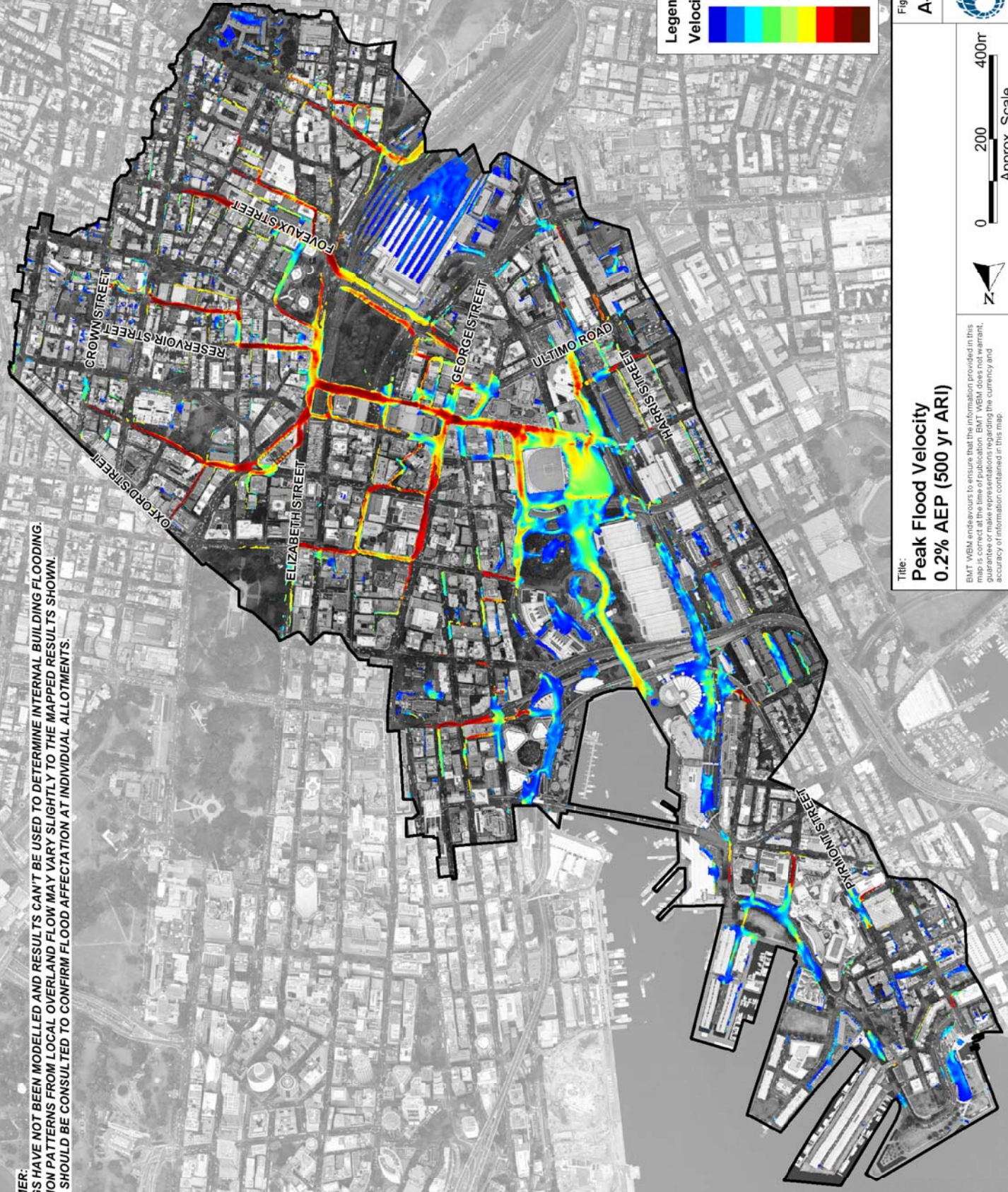


Figure: A-23

Rev: -

**Peak Flood Velocity
 0.2% AEP (500 yr ARI)**

BMT WBM endeavours to ensure that the information provided in this report is accurate and complete. BMT WBM does not warrant, guarantee or make representations regarding the currency and accuracy of information contained in this map.

Scale: 0 200 400m
 Approx. Scale

Filepath: S20012Drainage\WCR\AppendixA_FigureFigureA23_500YR_Velocity.wor

BMT WBM
 www.bmtwbm.com.au

DISCLAIMER:
 BUILDINGS HAVE NOT BEEN MODELLED AND RESULTS CAN'T BE USED TO DETERMINE INTERNAL BUILDING FLOODING.
 INUNDATION PATTERNS FROM LOCAL OVERLAND FLOW MAY VARY SLIGHTLY TO THE MAPPED RESULTS SHOWN.
 COUNCIL SHOULD BE CONSULTED TO CONFIRM FLOOD AFFECTATION AT INDIVIDUAL ALLOTMENTS.

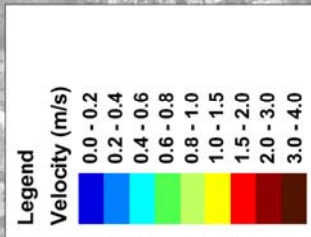
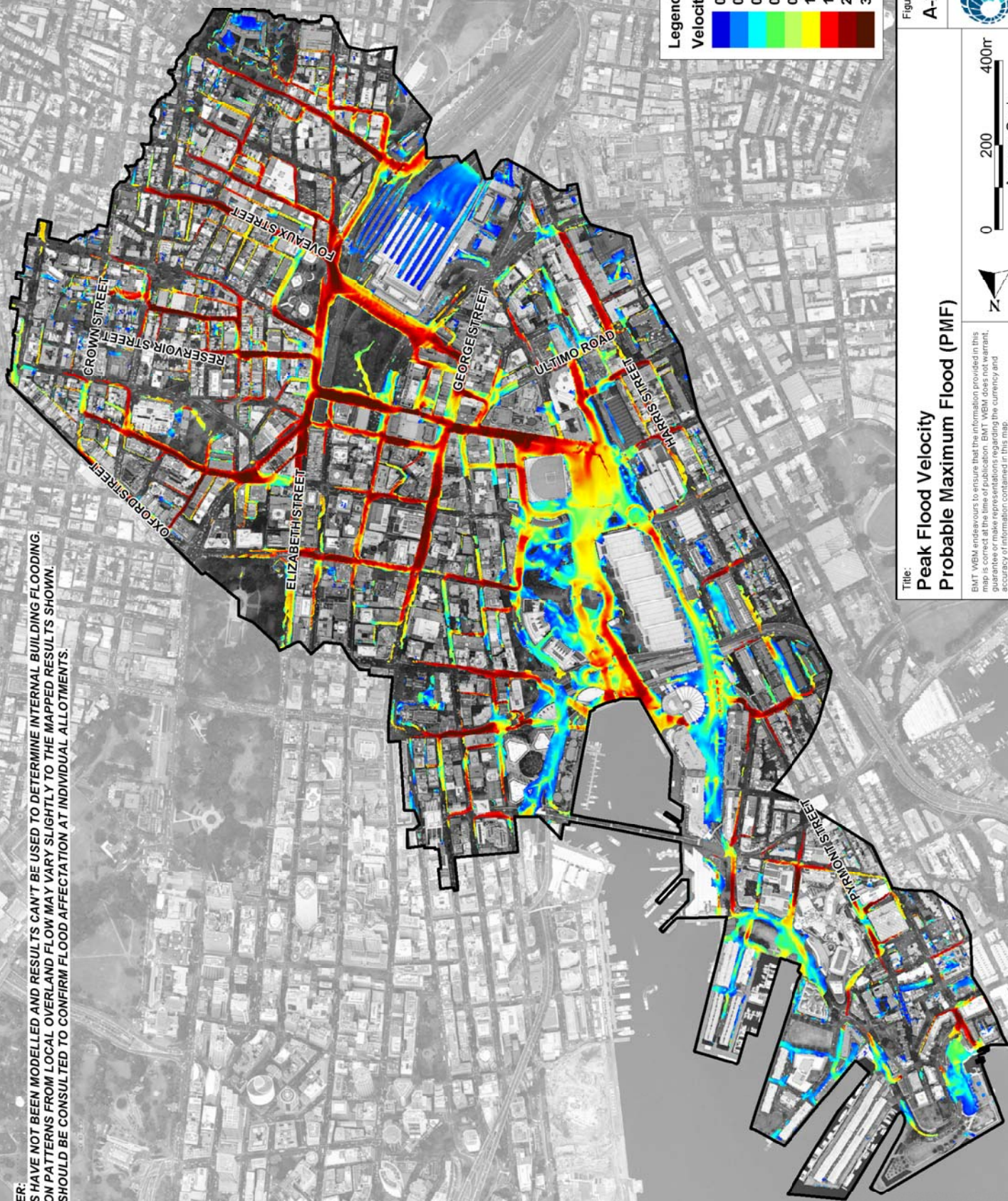


Figure: A-24

Rev: -

**Peak Flood Velocity
 Probable Maximum Flood (PMF)**

BMT WBM endeavours to ensure that the information provided in this document is accurate and complete. BMT WBM does not warrant, guarantee or make representations regarding the currency and accuracy of information contained in this map.

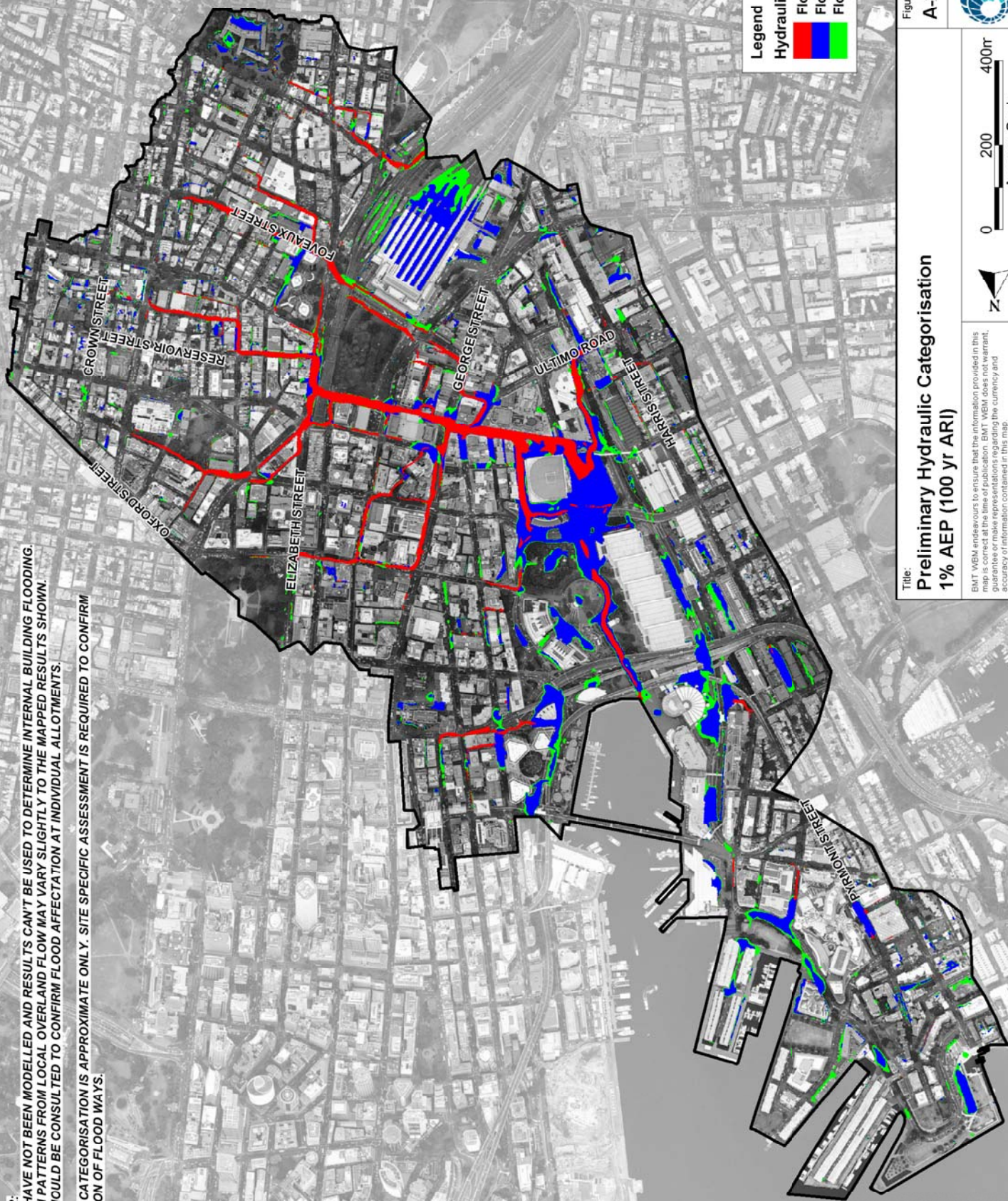
Scale: 0 200 400m
 Approx. Scale

Filepath: S20012Drainage\ORA-AppendixA_FigureFigureA24_PMF_Velocity.wcx

BMT WBM
 www.bmtwbm.com.au

DISCLAIMER:
 BUILDINGS HAVE NOT BEEN MODELLED AND RESULTS CAN'T BE USED TO DETERMINE INTERNAL BUILDING FLOODING.
 INUNDATION PATTERNS FROM LOCAL OVERLAND FLOW MAY VARY SLIGHTLY TO THE MAPPED RESULTS SHOWN.
 COUNCIL SHOULD BE CONSULTED TO CONFIRM FLOOD AFFECTATION AT INDIVIDUAL ALLOTMENTS.

HYDRAULIC CATEGORISATION IS APPROXIMATE ONLY. SITE SPECIFIC ASSESSMENT IS REQUIRED TO CONFIRM THE LOCATION OF FLOOD WAYS.



Legend

Hydraulic Categorisation

- █ Floodway
- █ Flood Storage
- █ Flood Fringe

Figure: **A-25** Rev: -

Title:
Preliminary Hydraulic Categorisation
1% AEP (100 yr ARI)

BMT WBM endeavours to ensure that the information provided in this report is accurate and complete to the best of our knowledge. BMT WBM does not guarantee or make representations regarding the currency and accuracy of information contained in this map.

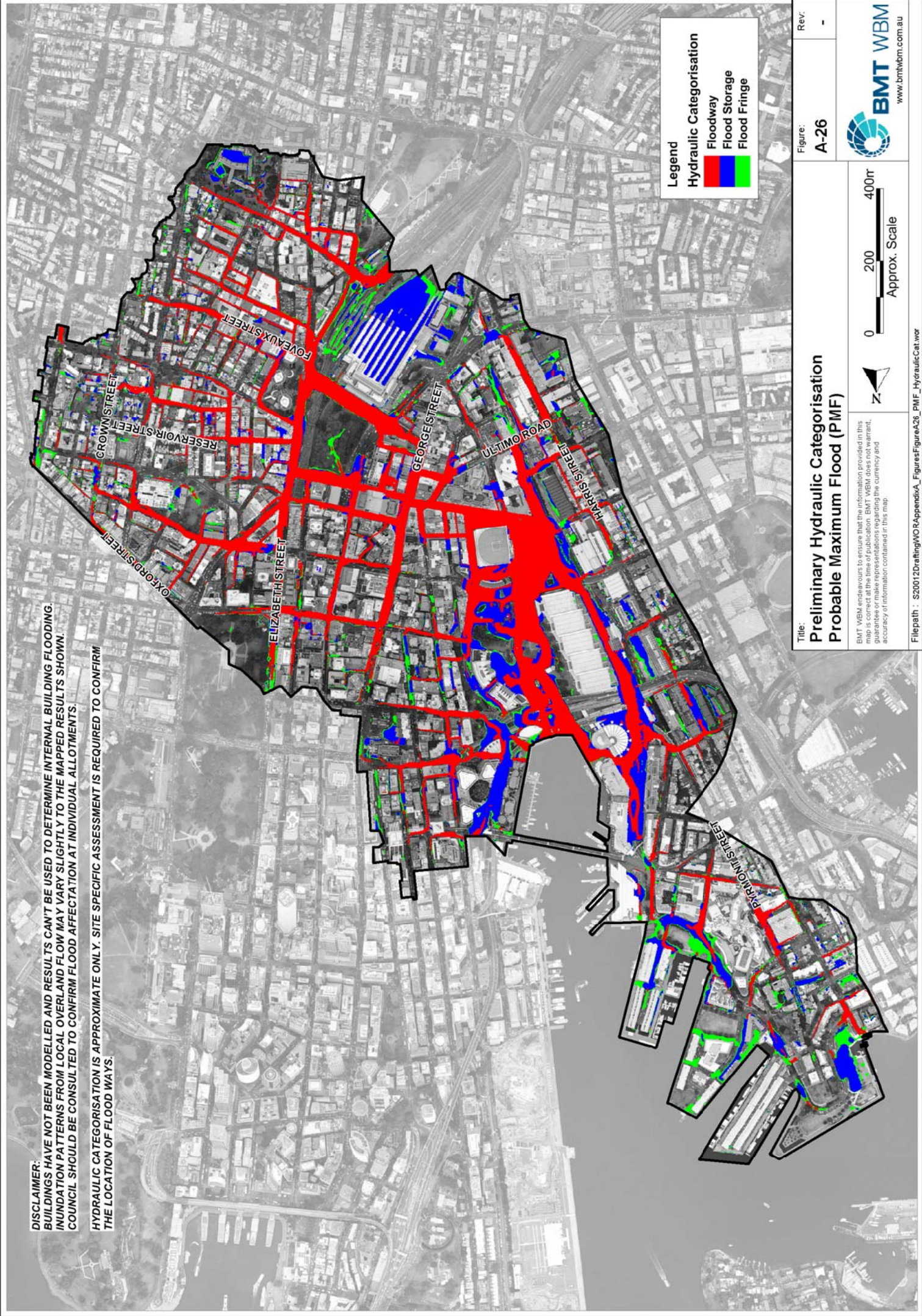
Scale: 0 200 400m
 Approx. Scale

BMT WBM
 www.bmtwbm.com.au

Filepath : S20012DraingWORAppendixA_FigureFigureA25_100YR_HydraulicCategor

DISCLAIMER:
 BUILDINGS HAVE NOT BEEN MODELLED AND RESULTS CAN'T BE USED TO DETERMINE INTERNAL BUILDING FLOODING.
 INUNDATION PATTERNS FROM LOCAL OVERLAND FLOW MAY VARY SLIGHTLY TO THE MAPPED RESULTS SHOWN.
 COUNCIL SHOULD BE CONSULTED TO CONFIRM FLOOD AFFECTATION AT INDIVIDUAL ALLOTMENTS.

HYDRAULIC CATEGORISATION IS APPROXIMATE ONLY. SITE SPECIFIC ASSESSMENT IS REQUIRED TO CONFIRM THE LOCATION OF FLOOD WAYS.



Legend

Hydraulic Categorisation

- █ Floodway
- █ Flood Storage
- █ Flood Fringe

Figure: A-26
 Rev: -



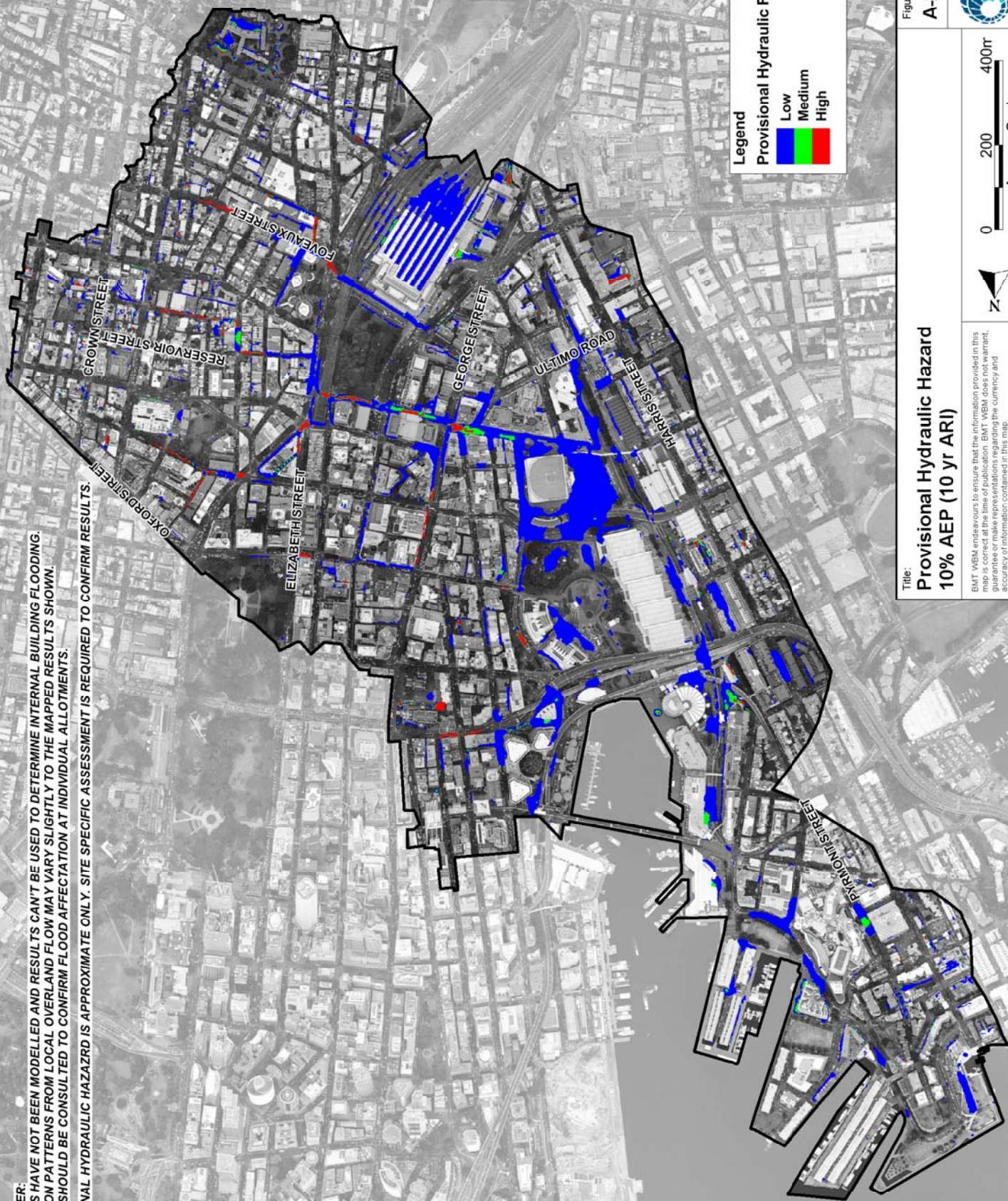
Title:
 Preliminary Hydraulic Categorisation
 Probable Maximum Flood (PMF)

BMT WBM endeavours to ensure that the information provided in this report is accurate and complete. BMT WBM does not warrant, represent, guarantee or make representations regarding the currency and accuracy of information contained in this map.



Filepath : S20012DraingWORAppendixA_FigureFigureA26_PMF_HydraulicCat.wor

DISCLAIMER:
 BUILDINGS HAVE NOT BEEN MODELLED AND RESULTS CAN'T BE USED TO DETERMINE INTERNAL BUILDING FLOODING.
 INUNDATION PATTERNS FROM LOCAL OVERLAND FLOW MAY VARY SLIGHTLY TO THE MAPPED RESULTS SHOWN.
 COUNCIL SHOULD BE CONSULTED TO CONFIRM FLOOD AFFECTATION AT INDIVIDUAL ALLOTMENTS.
 PROVISIONAL HYDRAULIC HAZARD IS APPROXIMATE ONLY. SITE SPECIFIC ASSESSMENT IS REQUIRED TO CONFIRM RESULTS.



Legend
 Provisional Hydraulic Flood Hazard

Low	Blue
Medium	Green
High	Red

Title:
 Provisional Hydraulic Hazard
 10% AEP (10 yr ARI)

Figure:
 A-27

Rev.:
 -

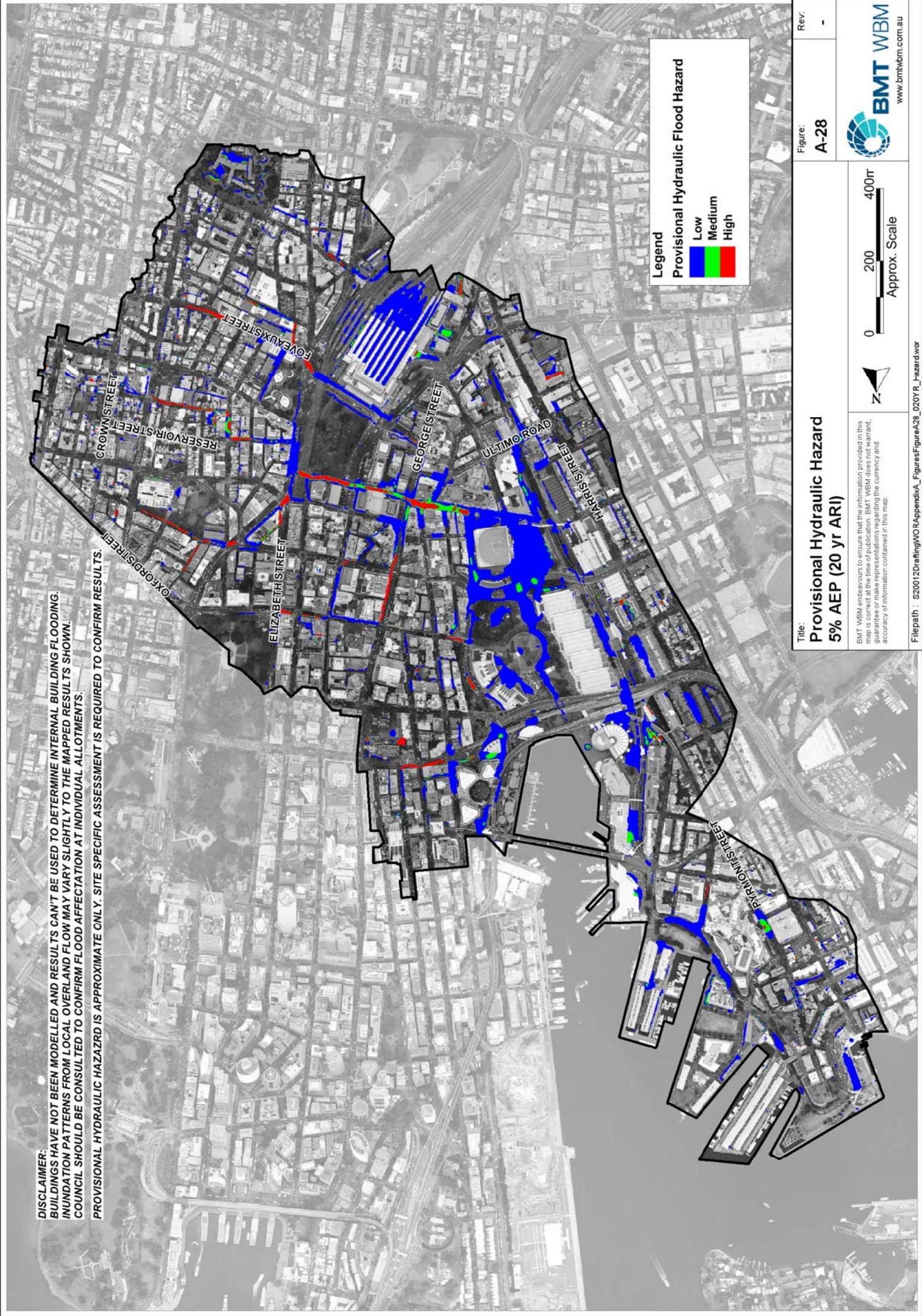
Scale:
 0 200 400m
 Approx. Scale

Disclaimer:
 BMT WBM endeavours to ensure that the information provided in this report is accurate and complete. BMT WBM does not warrant, represent, guarantee or make representations regarding the currency and accuracy of information contained in this map.

Filepath: S20012DrainageWORAppendixA_FigureFigureA27_010YR_hazard.rvt

BMT WBM
 www.bmtwbm.com.au

DISCLAIMER:
 BUILDINGS HAVE NOT BEEN MODELLED AND RESULTS CAN'T BE USED TO DETERMINE INTERNAL BUILDING FLOODING.
 INUNDATION PATTERNS FROM LOCAL OVERLAND FLOW MAY VARY SLIGHTLY TO THE MAPPED RESULTS SHOWN.
 COUNCIL SHOULD BE CONSULTED TO CONFIRM FLOOD AFFECTATION AT INDIVIDUAL ALLOTMENTS.
 PROVISIONAL HYDRAULIC HAZARD IS APPROXIMATE ONLY. SITE SPECIFIC ASSESSMENT IS REQUIRED TO CONFIRM RESULTS.



Legend
 Provisional Hydraulic Flood Hazard

Blue	Low
Green	Medium
Red	High

Title:
 Provisional Hydraulic Hazard
 5% AEP (20 yr ARI)

Figure:
 A-28

Rev.:
 -

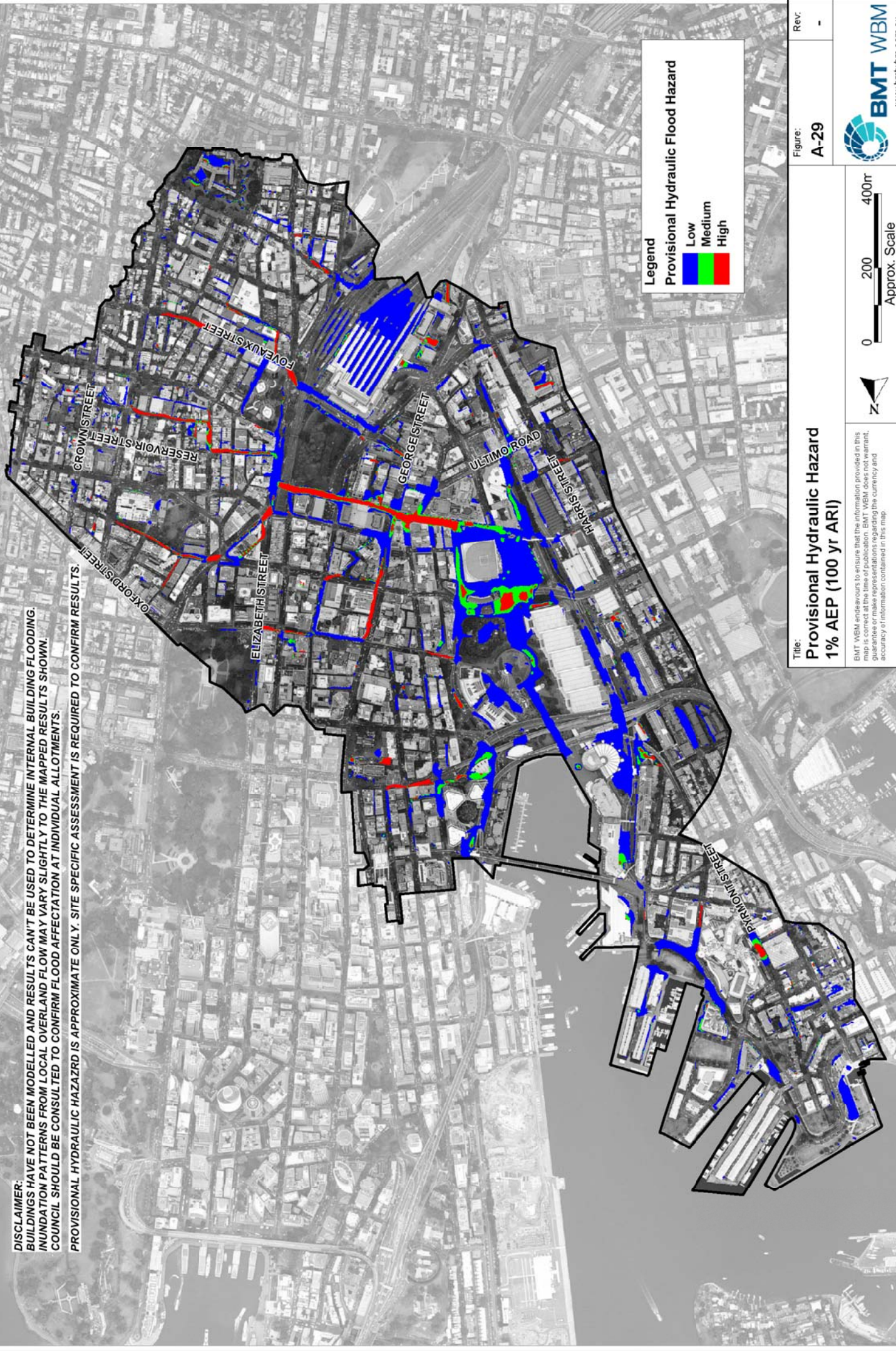
Scale:
 0 200 400m
 Approx. Scale

Disclaimer:
 BMT WBM endeavours to ensure that the information provided in this report is accurate and complete. BMT WBM does not warrant, represent, guarantee or make representations regarding the currency and accuracy of information contained in this map.

Filepath: S20012DrainageWORAppendixA_FigureA28_020YR_hazard.rvt

BMT WBM
 www.bmtwbm.com.au

DISCLAIMER:
 BUILDINGS HAVE NOT BEEN MODELLED AND RESULTS CAN'T BE USED TO DETERMINE INTERNAL BUILDING FLOODING.
 INUNDATION PATTERNS FROM LOCAL OVERLAND FLOW MAY VARY SLIGHTLY TO THE MAPPED RESULTS SHOWN.
 COUNCIL SHOULD BE CONSULTED TO CONFIRM FLOOD AFFECTATION AT INDIVIDUAL ALLOTMENTS.
 PROVISIONAL HYDRAULIC HAZARD IS APPROXIMATE ONLY. SITE SPECIFIC ASSESSMENT IS REQUIRED TO CONFIRM RESULTS.



Legend
 Provisional Hydraulic Flood Hazard

Low	Blue
Medium	Green
High	Red

Title:
 Provisional Hydraulic Hazard
 1% AEP (100 yr ARI)

Figure:
 A-29

Rev.:
 -

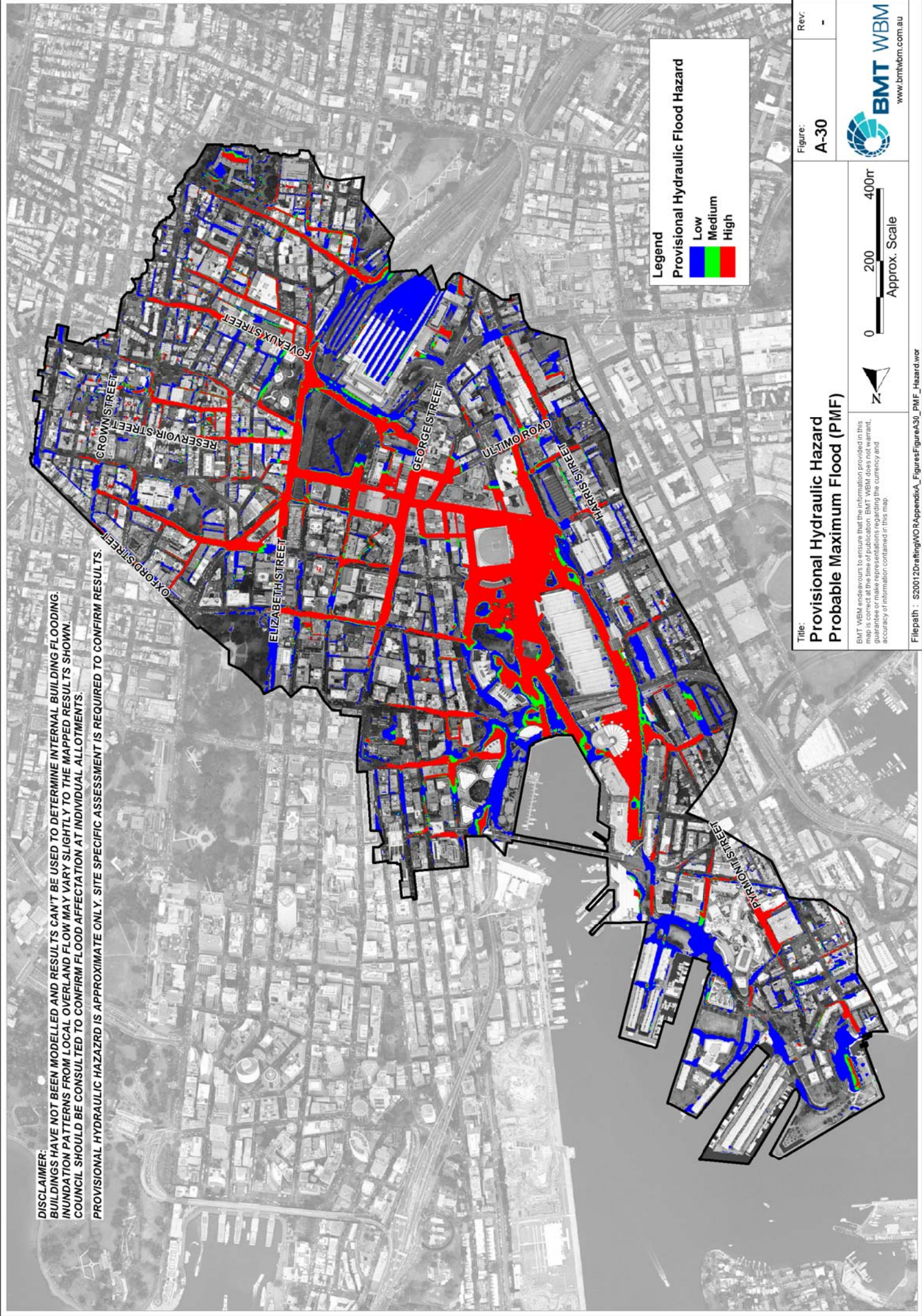
Scale:
 0 200 400m
 Approx. Scale

Disclaimer:
 BMT WBM endeavours to ensure that the information provided in this report is accurate and complete. BMT WBM does not warrant, represent, guarantee or make representations regarding the currency and accuracy of information contained in this map.

Filepath: S20012DrainageWCR-AppendixA_FigureFigureA29_100YR_Hazard.rvt

BMT WBM
 www.bmtwbm.com.au

DISCLAIMER:
 BUILDINGS HAVE NOT BEEN MODELLED AND RESULTS CAN'T BE USED TO DETERMINE INTERNAL BUILDING FLOODING.
 INUNDATION PATTERNS FROM LOCAL OVERLAND FLOW MAY VARY SLIGHTLY TO THE MAPPED RESULTS SHOWN.
 COUNCIL SHOULD BE CONSULTED TO CONFIRM FLOOD AFFECTATION AT INDIVIDUAL ALLOTMENTS.
 PROVISIONAL HYDRAULIC HAZARD IS APPROXIMATE ONLY. SITE SPECIFIC ASSESSMENT IS REQUIRED TO CONFIRM RESULTS.



Legend
 Provisional Hydraulic Flood Hazard

Low	Green
Medium	Yellow
High	Red

Title:
 Provisional Hydraulic Hazard
 Probable Maximum Flood (PMF)

Figure:
 A-30

Rev:
 -

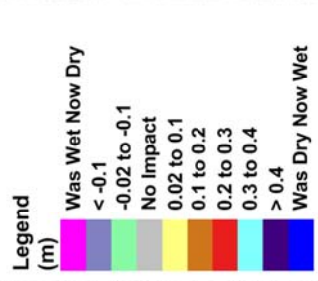
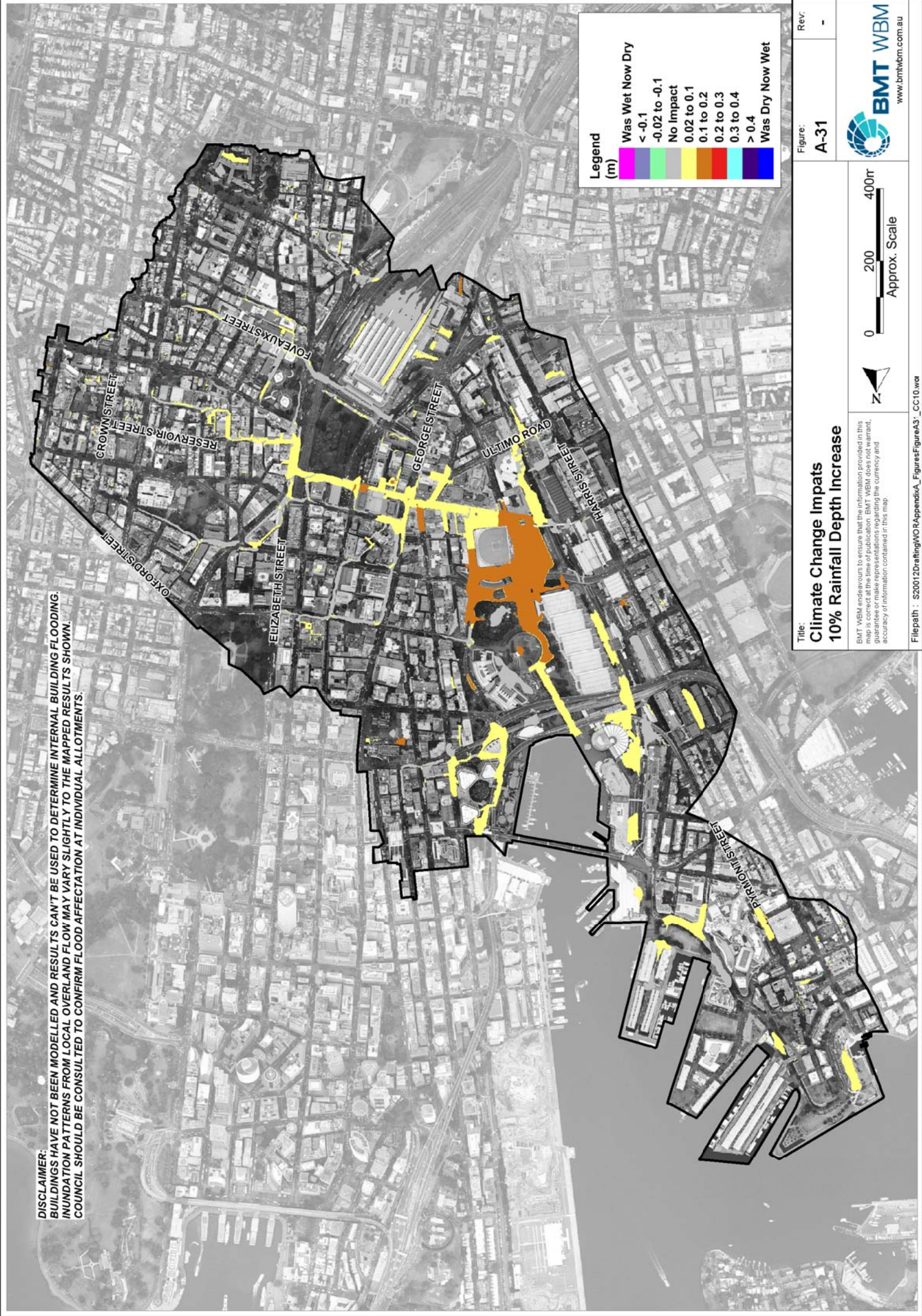
Scale:
 0 200 400m
 Approx. Scale

Disclaimer:
 BMT WBM endeavours to ensure that the information provided in this report is accurate and complete to the best of our knowledge, skill, care and attention. BMT WBM does not warrant, represent or make representations regarding the currency and accuracy of information contained in this map.

Filepath: S20012DrainageWCRAppendixA_FigureFigureA30_PMF_Hazard.vor

Logo:
 BMT WBM
 www.bmtwbm.com.au

DISCLAIMER:
 BUILDINGS HAVE NOT BEEN MODELLED AND RESULTS CAN'T BE USED TO DETERMINE INTERNAL BUILDING FLOODING.
 INUNDATION PATTERNS FROM LOCAL OVERLAND FLOW MAY VARY SLIGHTLY TO THE MAPPED RESULTS SHOWN.
 COUNCIL SHOULD BE CONSULTED TO CONFIRM FLOOD AFFECTATION AT INDIVIDUAL ALLOTMENTS.



Title: Climate Change Impacts
 10% Rainfall Depth Increase

Figure: A-31

Rev: -

Scale: 0 200 400m
 Approx. Scale

Disclaimer: BMT WBM endeavours to ensure that the information provided in this report is accurate and complete. BMT WBM does not warrant, represent, guarantee or make representations regarding the currency and accuracy of information contained in this map.

Filepath: S20012DrainageWORAppendixA_FigureFigureA31_CC10.wor

BMT WBM
 www.bmtwbm.com.au